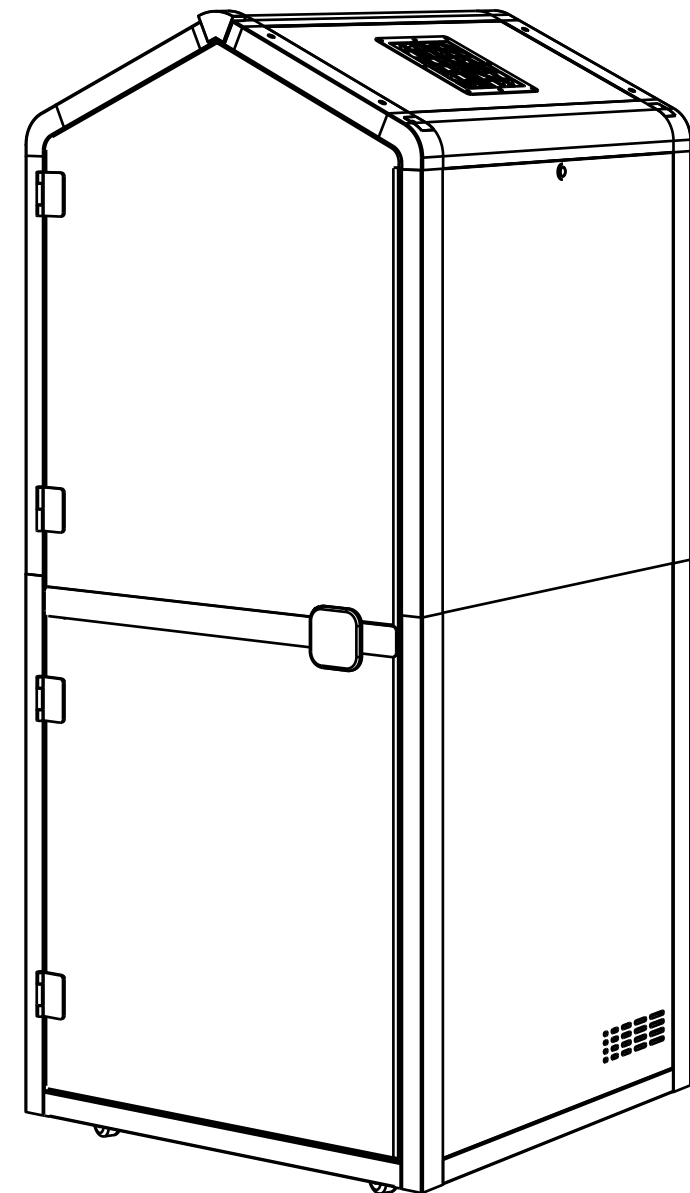


FlexiSpot

Item No. EP1S

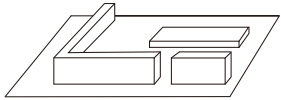
User Manual



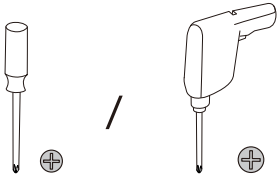
Specifications

Product Dimensions	Exterior: 39.37"x39.37"x90.55" Interior: 34.21"x35.43"x78.74"		
Max. Load Capacity of Product	287 lbs	Max. Load Capacity of Tabletop	55 lbs
Sensor Device	Human Sensing Central Lighting System		
Ventilation System	Fresh Air Ventilation System		
Soundproofing Effect	25dB±5dB		
Total Maximum Power of The Sockets	1000W		
Charging Device	USB-A/USB-C 65W Fast charge		

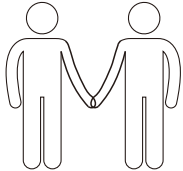
Pre-installation Guide



Install on carpet to prevent scratches.



Bring your own screwdriver or power drill.



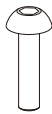
Need two or more people to cooperate together.



Bring your own utility knife or scissors.

Accessory Package

Figures shown are for reference only. Please contact customer service if there are any accessories or tools missing.



Ax4



Bx10



Cx12



Dx14



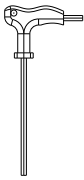
Ex6



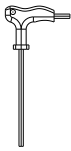
Fx1



Gx12



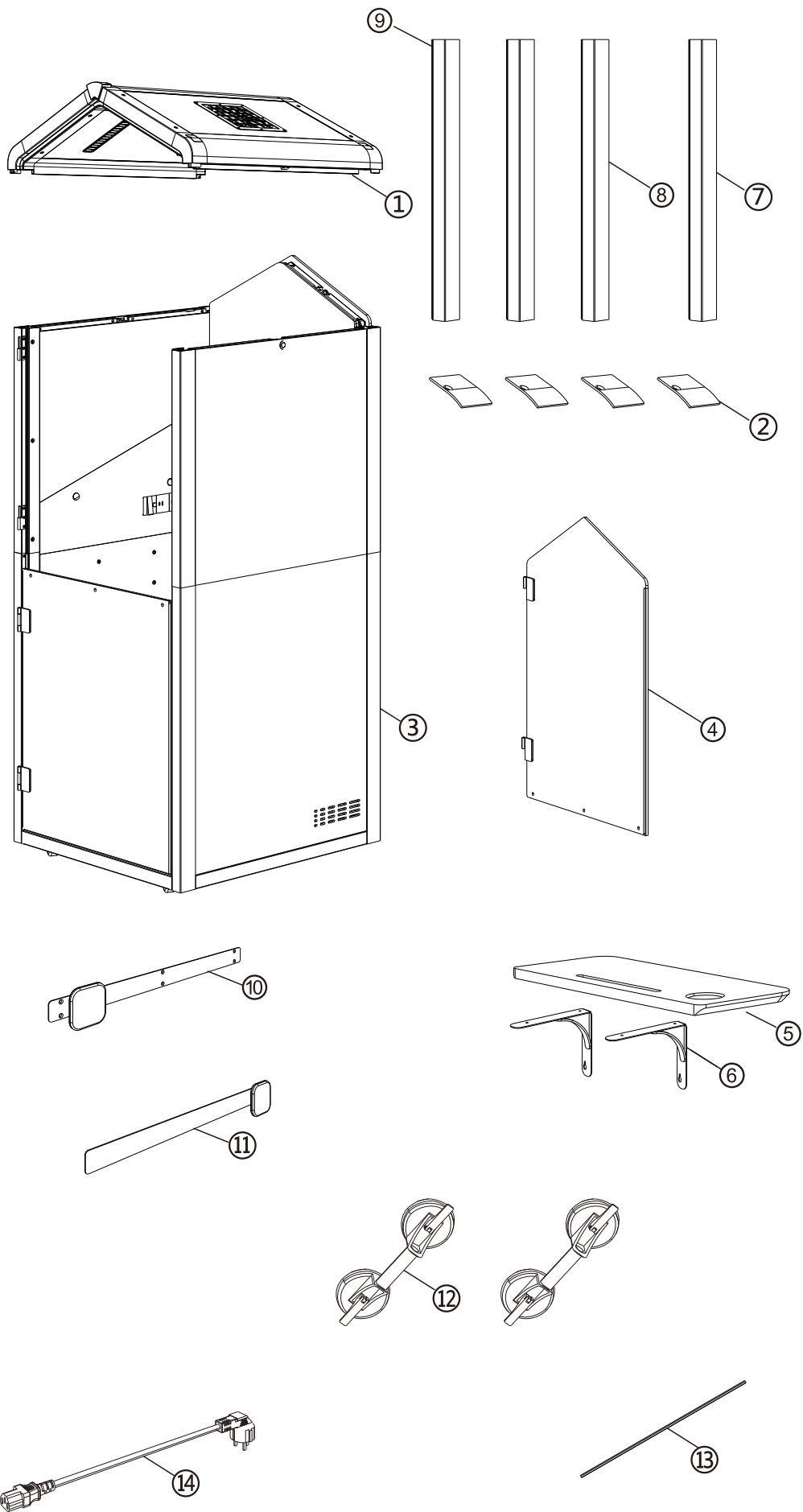
Hx1



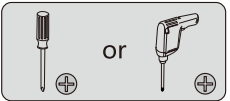
Ix1

Part List

① Roof x1	② Top cover x4 (Label serial number 1, 2, 3, 4)	③ Main body of the frame x1	④ Upper glass door x1
⑤ Tabletop x1	⑥ Table support x2	⑦ Hinge decoration cover x1 (Label number 1)	⑧ Magnet trim strip x1 (Label number 2)
⑨ Decorative cover x2 (Label serial number 3, 4)	⑩ Inner sidehandle x1	⑪ Outside handle x1	⑫ Sealing strip x1
⑬ Suction cup x2	⑭ Product power cord x1		



01 Open the box



Self-prepared

1

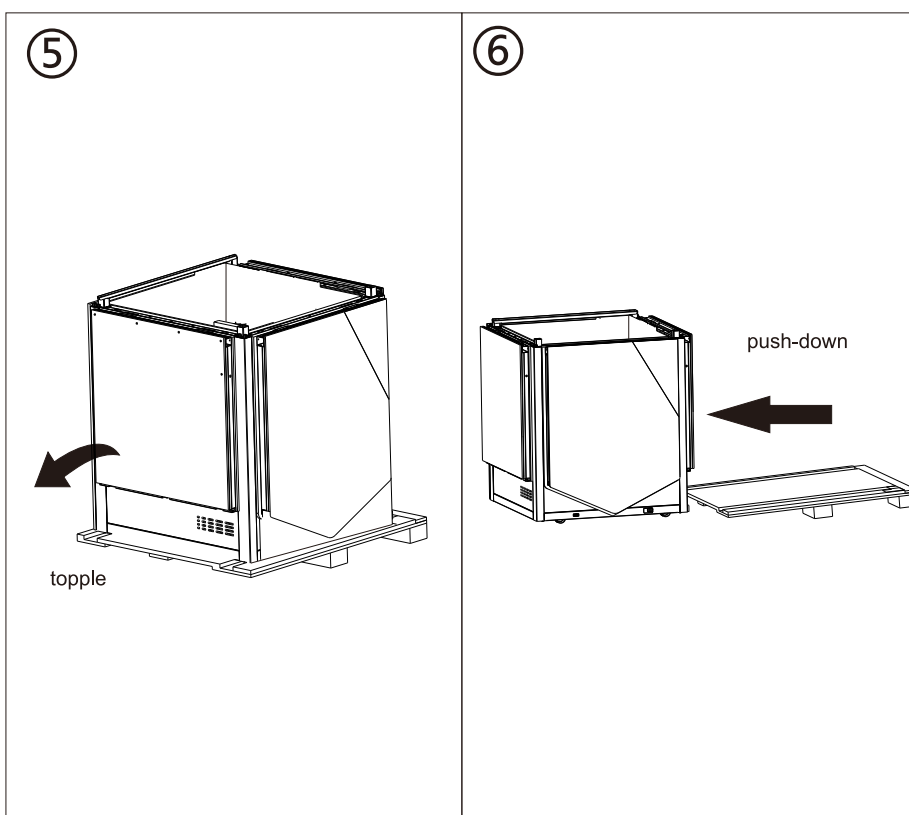
2 Remove the upper glass door and remove the remaining packages together

! Pay attention to the risk of falling on the glass side, and hold the glass side

3 ! Remove the narrow wood block

4

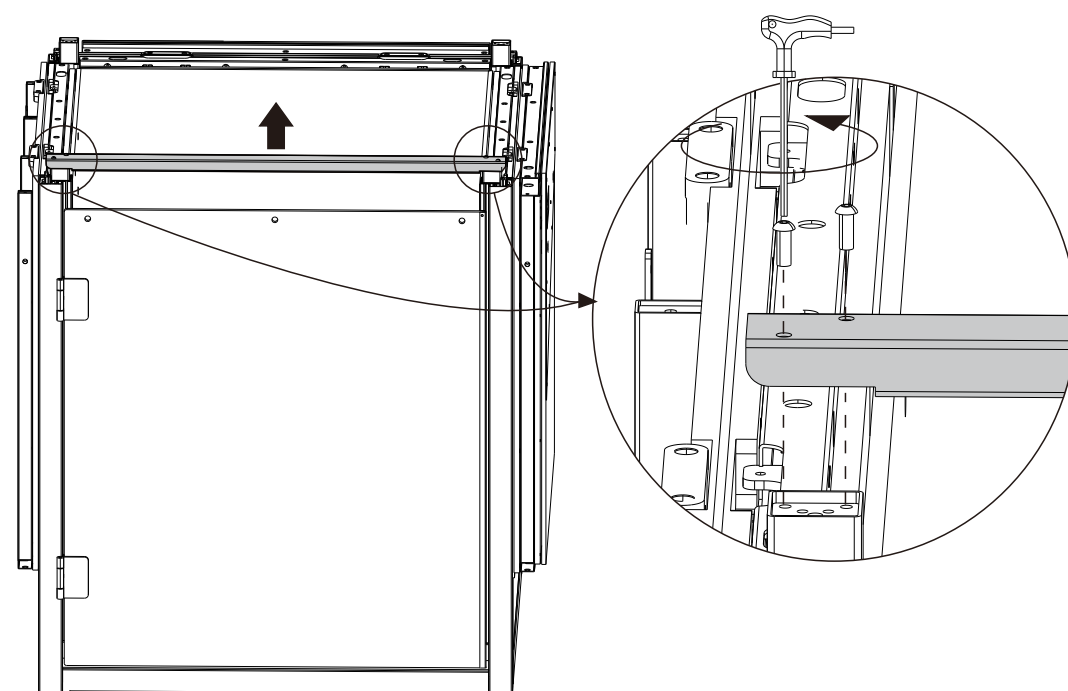
disassemble



02

Remove the beam

! Loosen the four screws and remove the beam

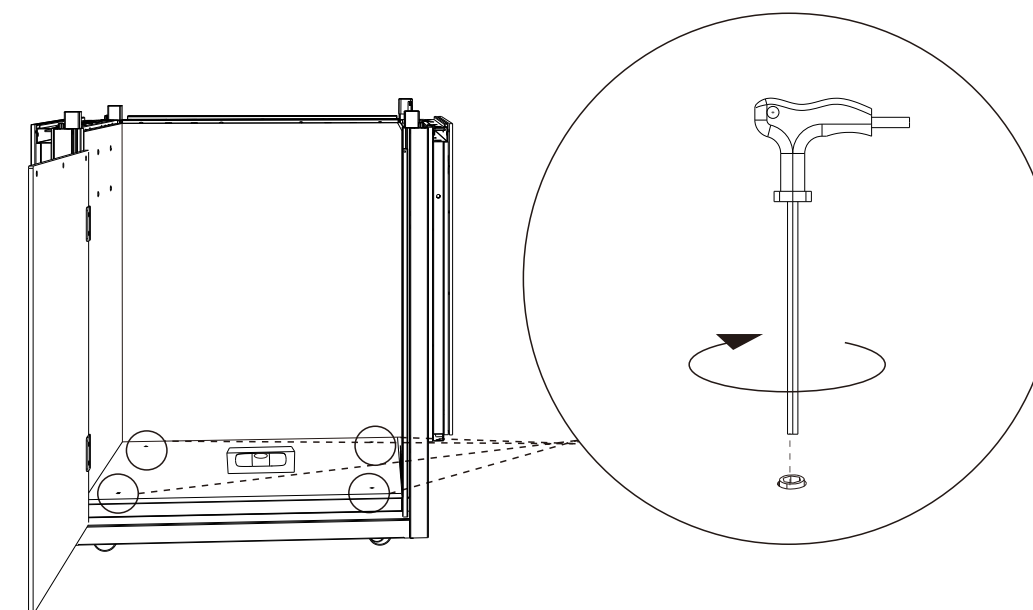
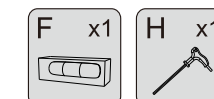


03

Secure the supporting feet to stabilize the Pod base

! Install to selected location. Select smooth road surface for implementation

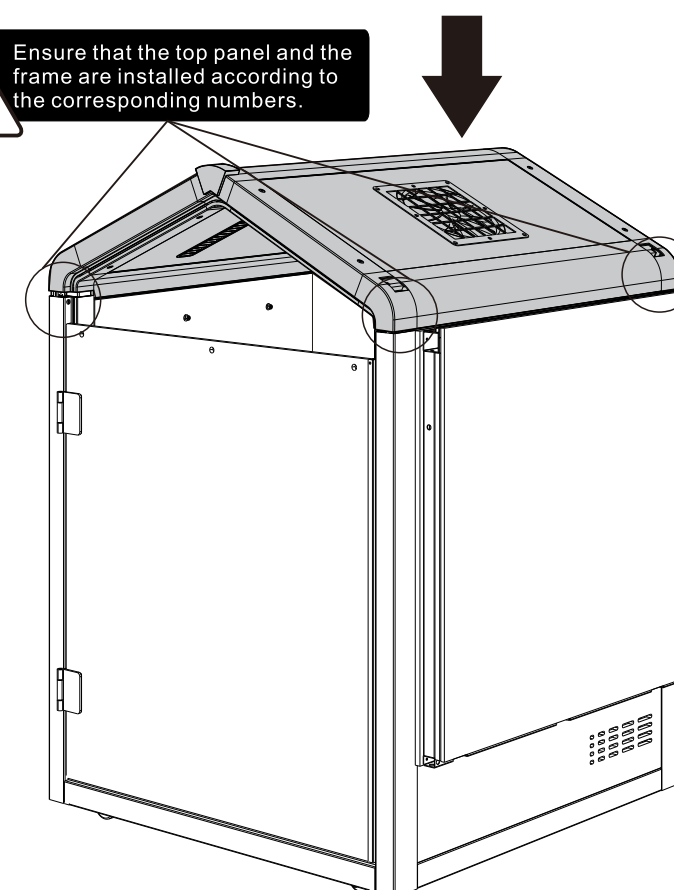
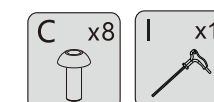
! Lift up the carpet, lock the four supporting feet in turn, touch the floor, and then put the carpet back



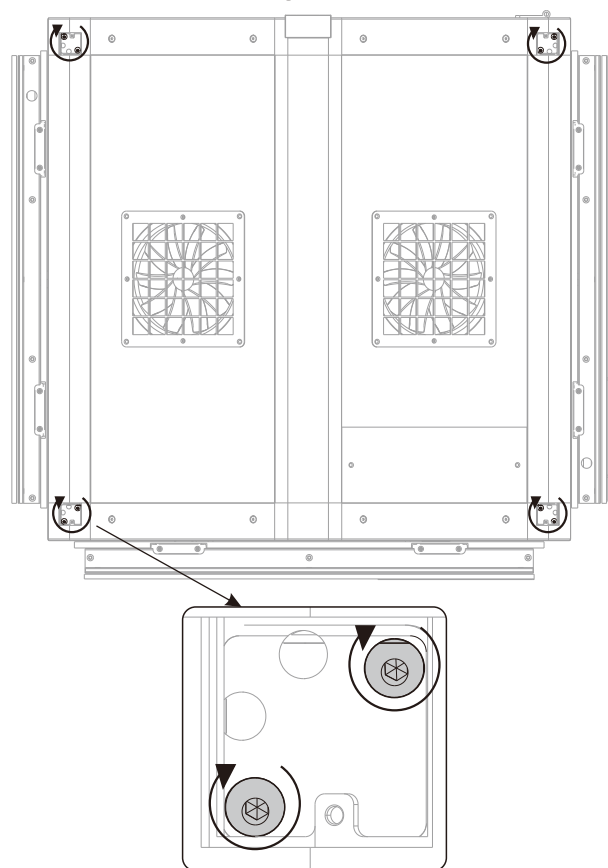
04

Mounting top

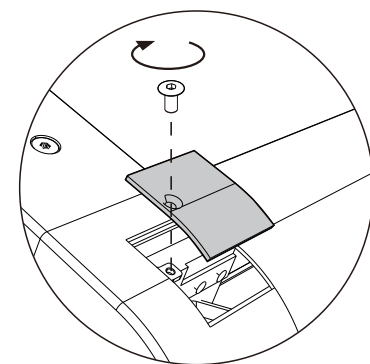
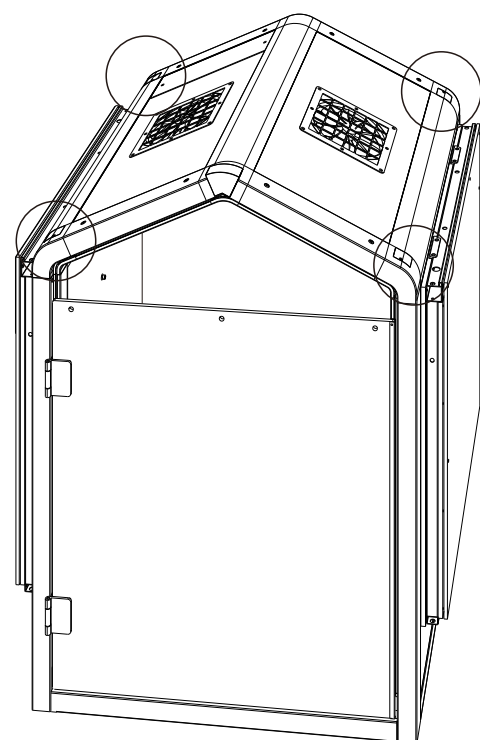
① ! Ensure that the top panel and the frame are installed according to the corresponding numbers.



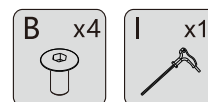
② Screw installation position diagram



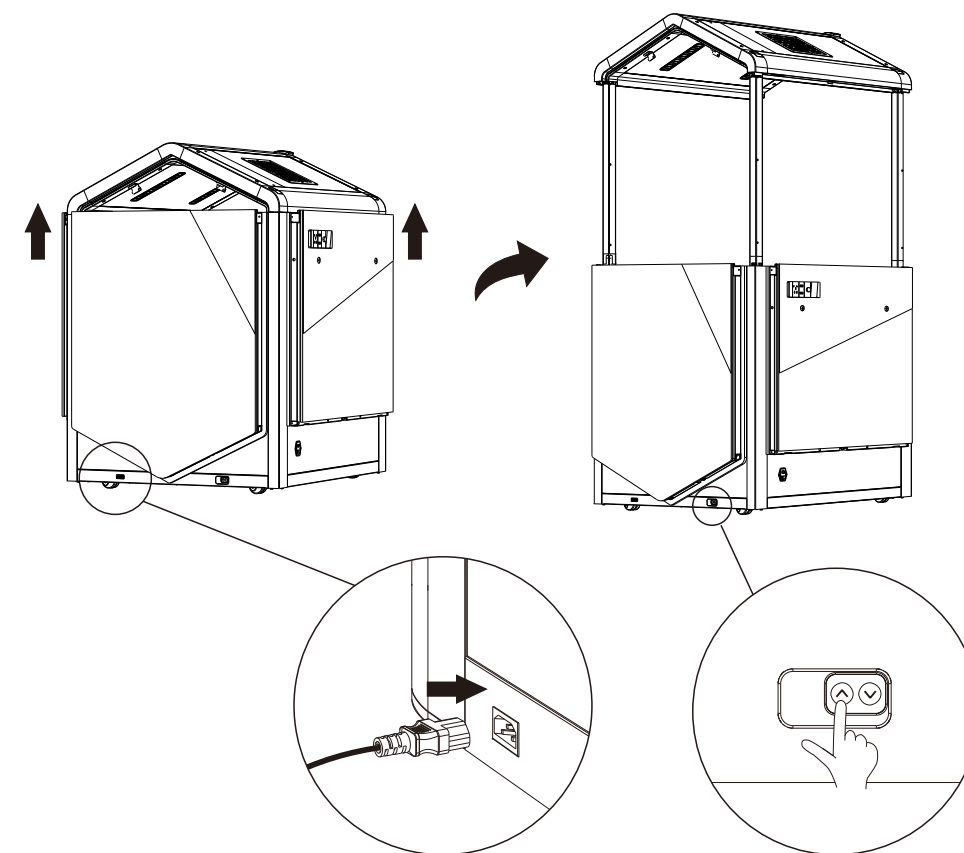
05 Install the top cover



! Install the cover plate according to the numbers

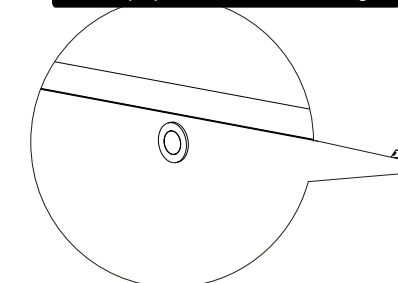


06 Turn on the motor power supply and raise the frame body

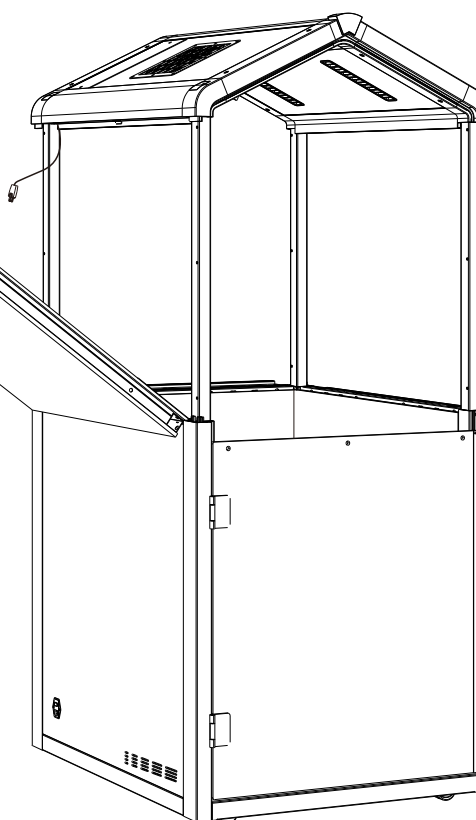
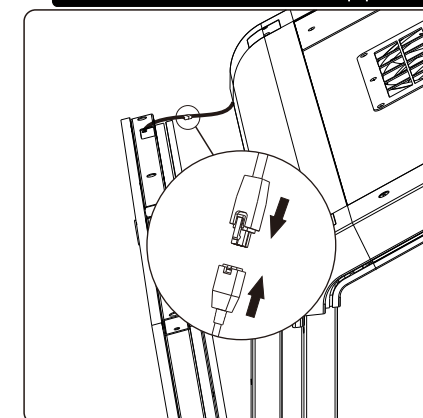


07 Install the upper left flip plate

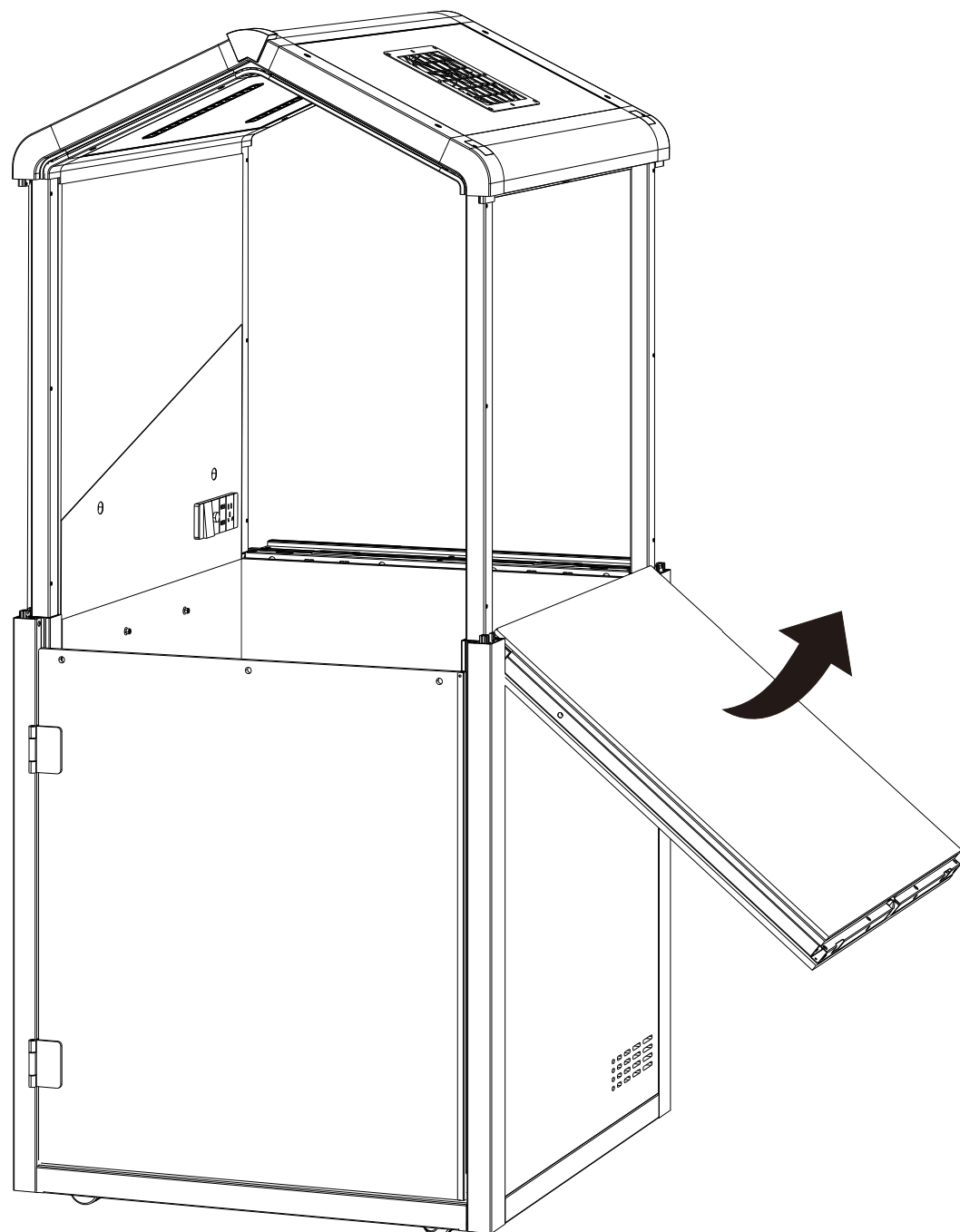
! Make sure the button does not pop out before installing



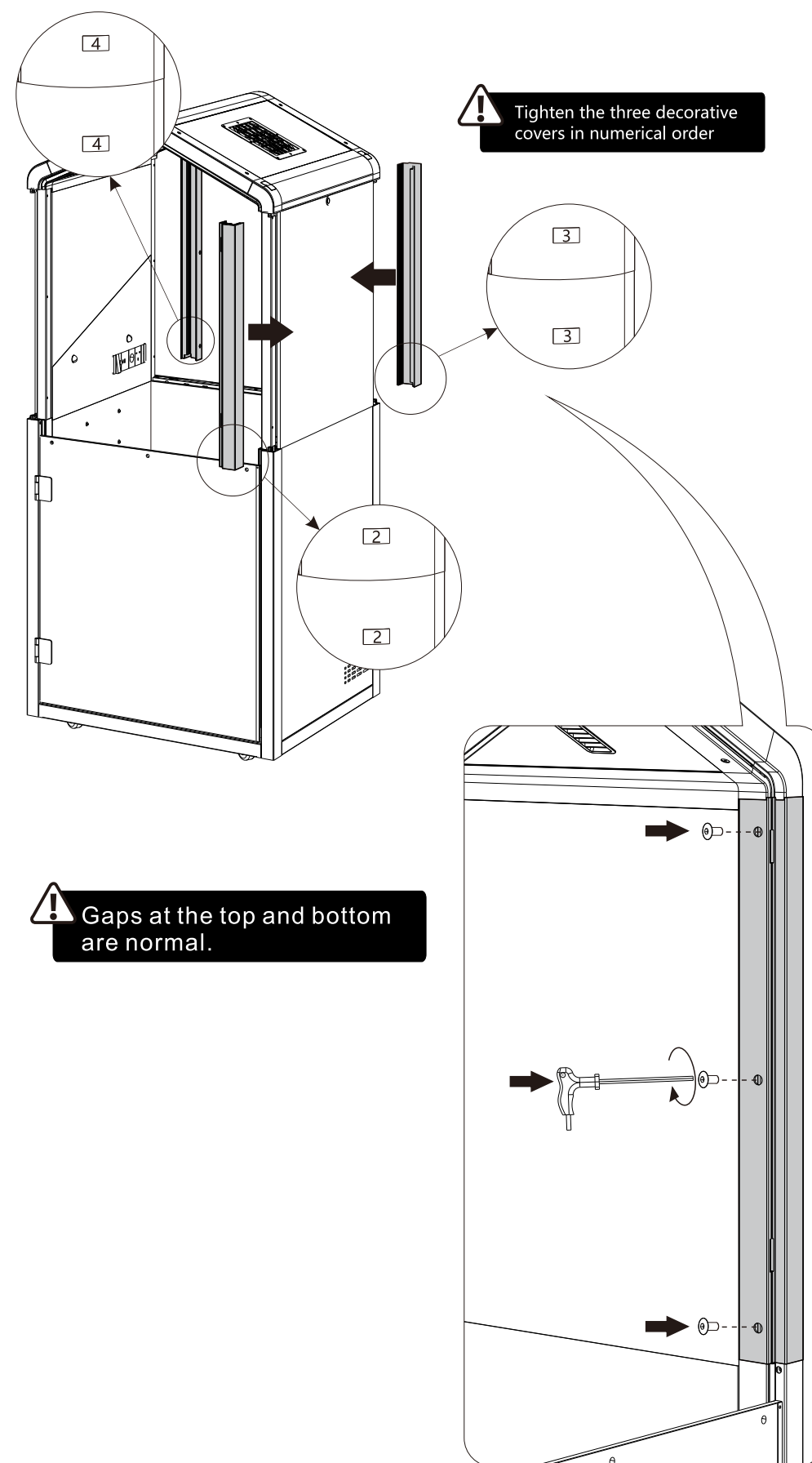
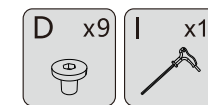
! After connecting the cable, please tuck them back into the flip panel hole.



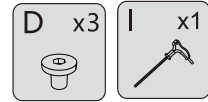
08 Install the upper right flip plate



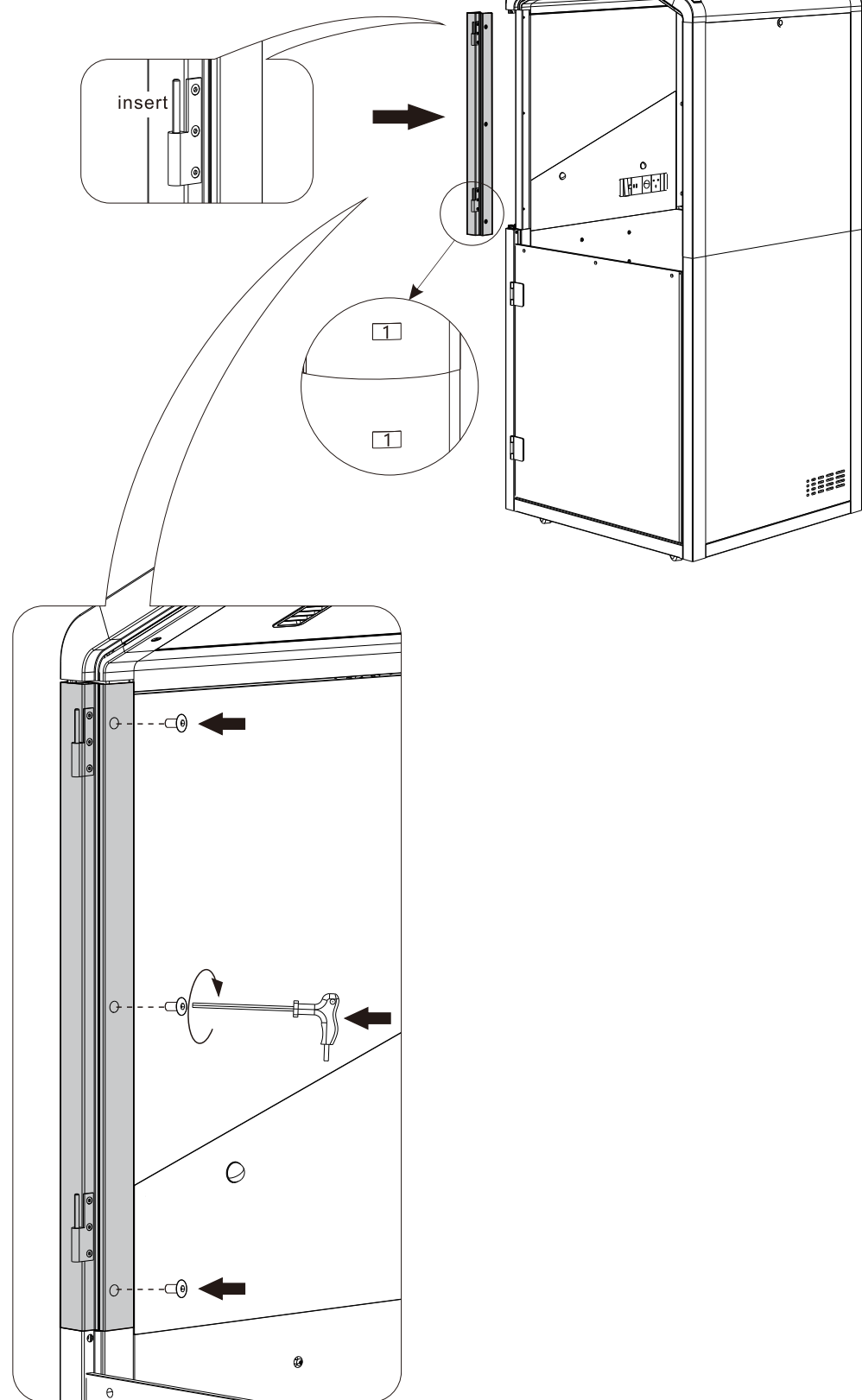
09 Install the decorative cover



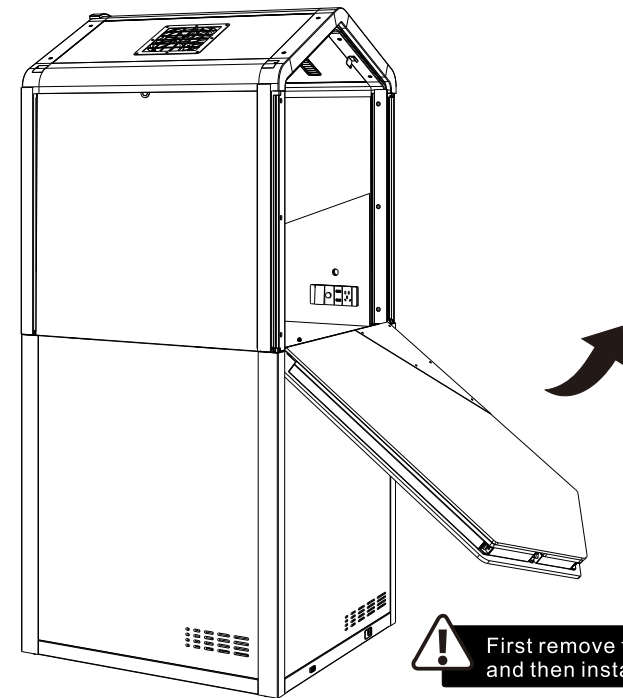
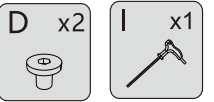
10 Install the hinge decorative cover



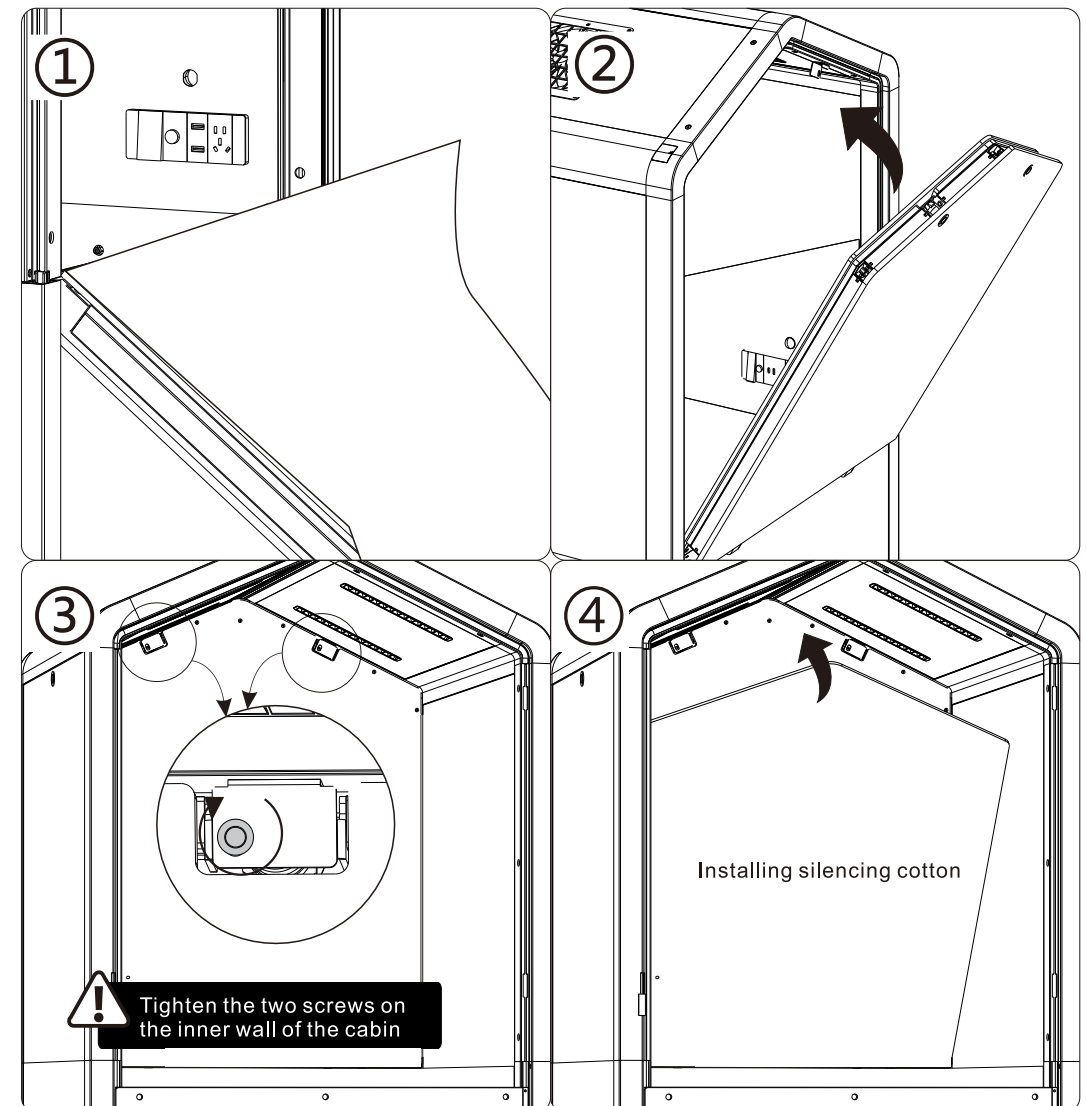
! The hinge decorative cover is installed on the left side support column of the glass door



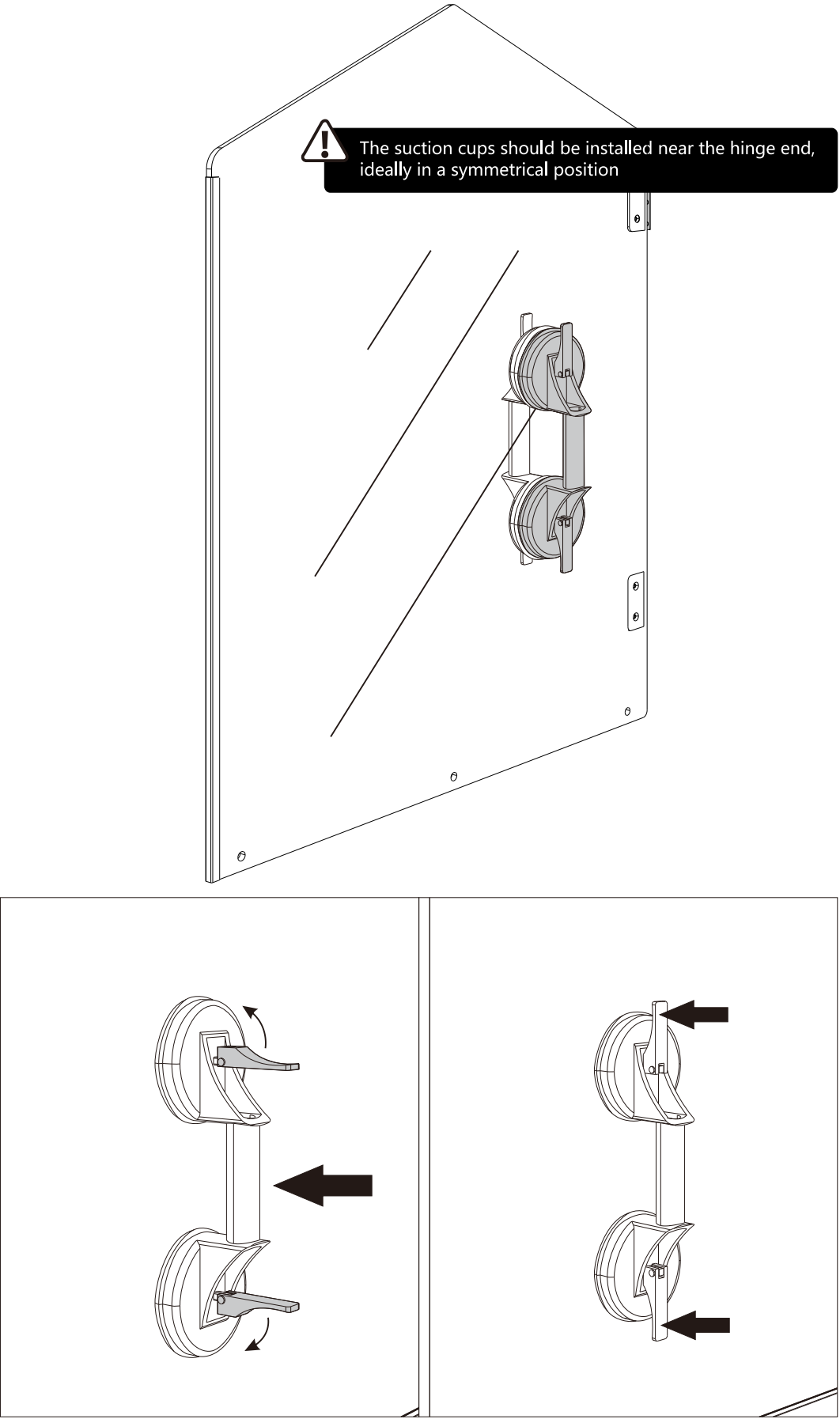
11 Flip plate after installation



! First remove the silencing cotton and then install the upper flip plate

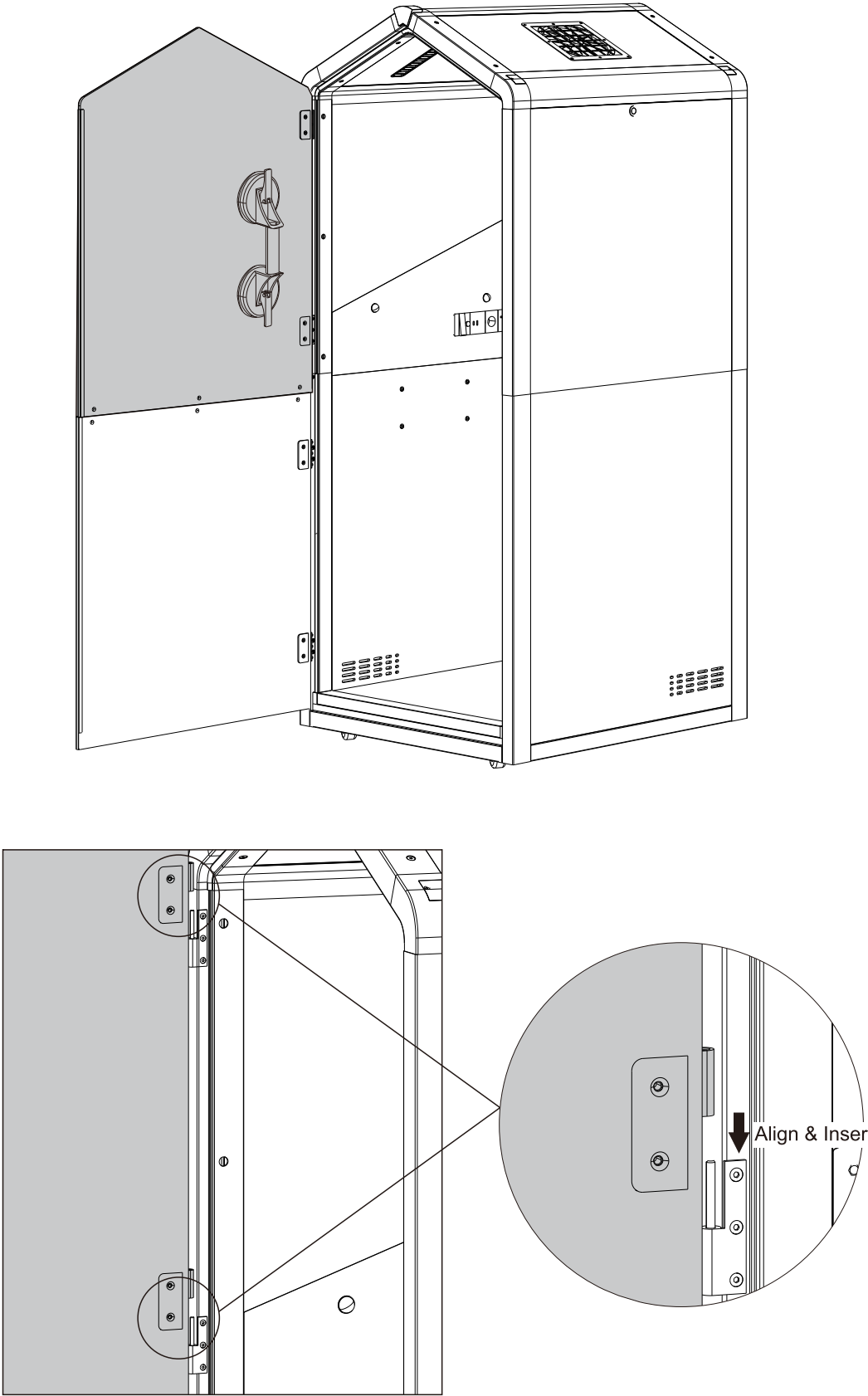


12 Install the suction cups

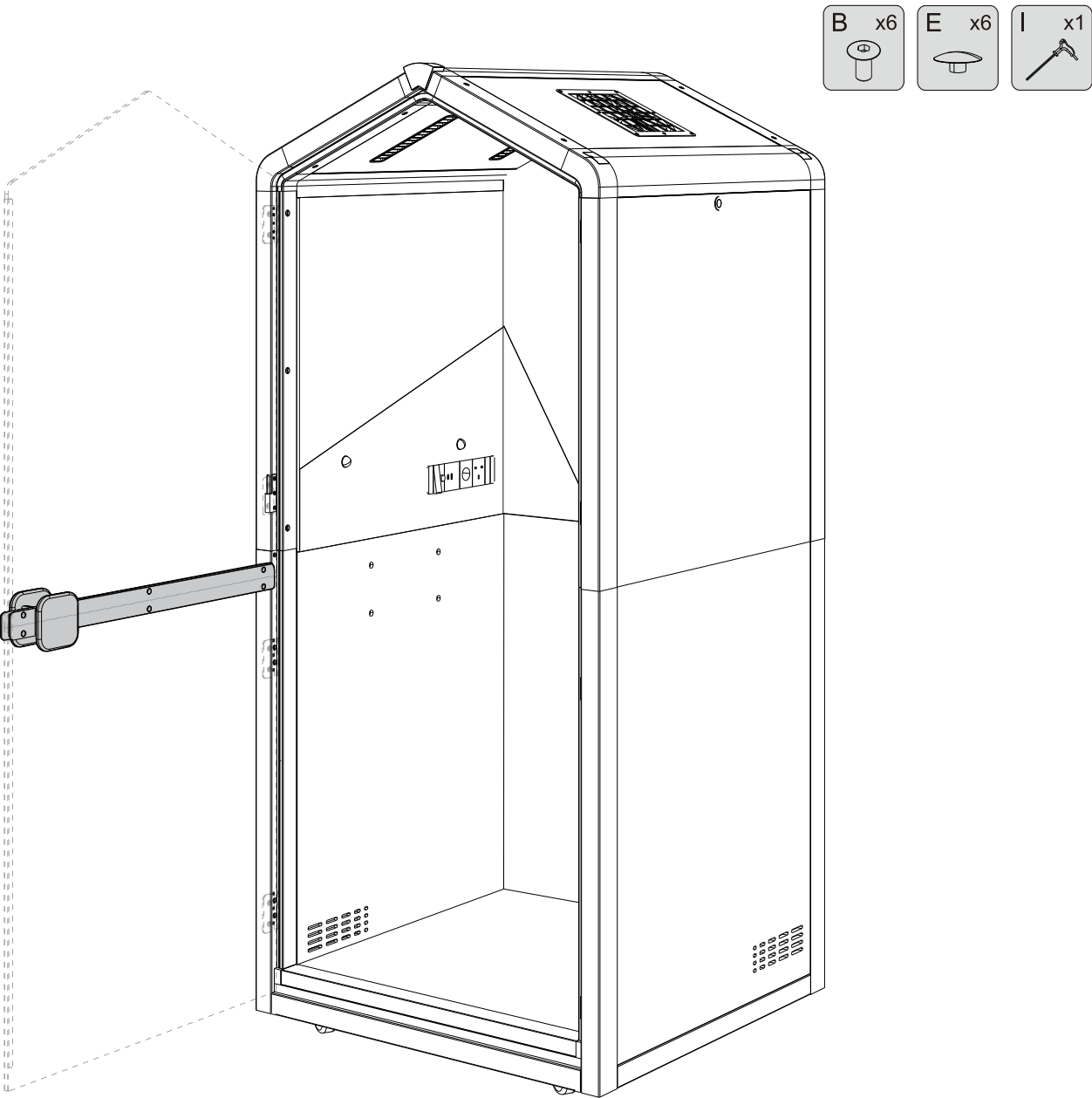


13 Install the upper glass door

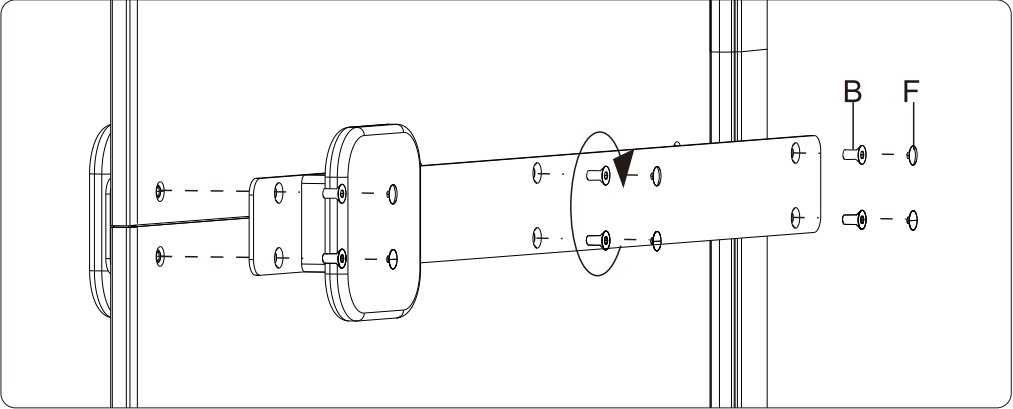
! Be careful to hold the glass to prevent toppling



14 Install door handles

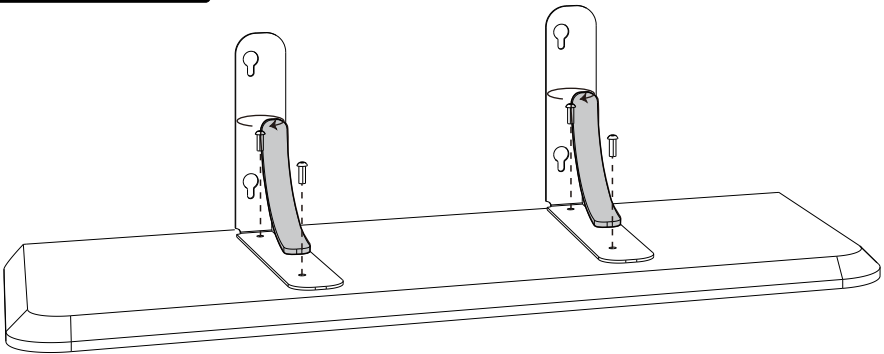


After fastening the outer door handle, align the inner door handle. Tighten the screws and cover the screw caps.

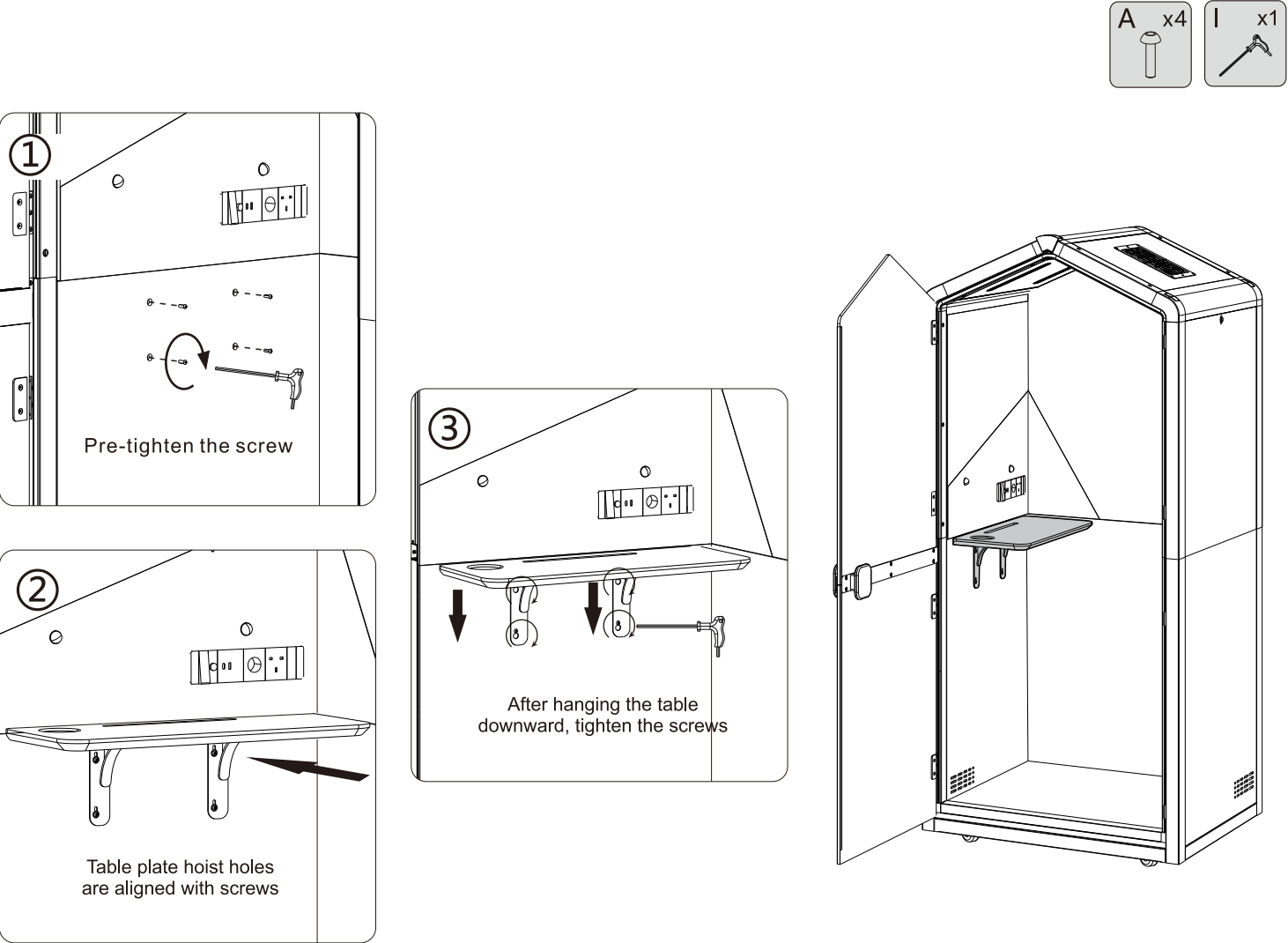


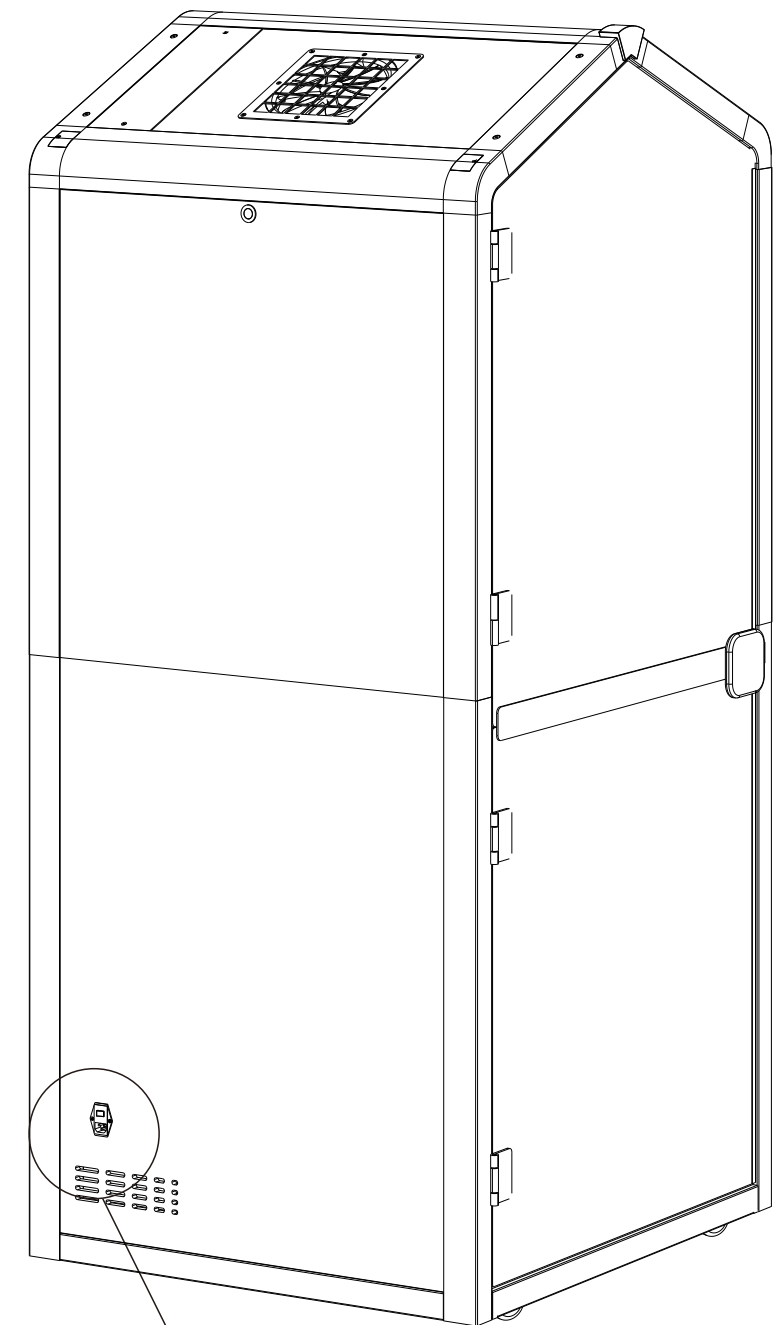
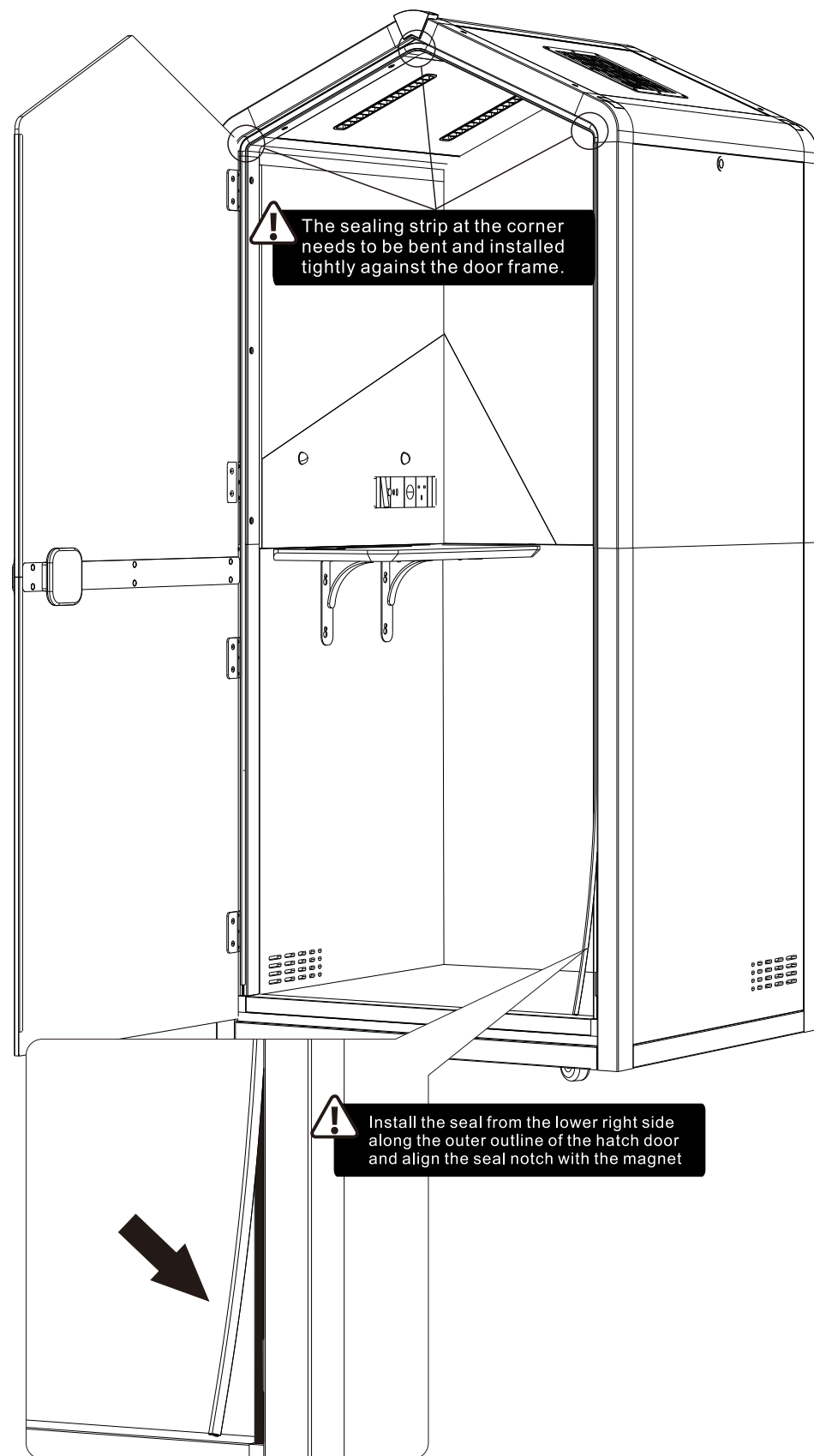
15 Assemble the Tabletop

! Pay attention to the front and back of the table when installing

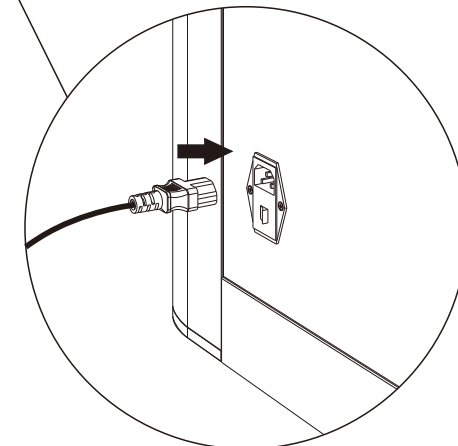


16 Install the Tabletop

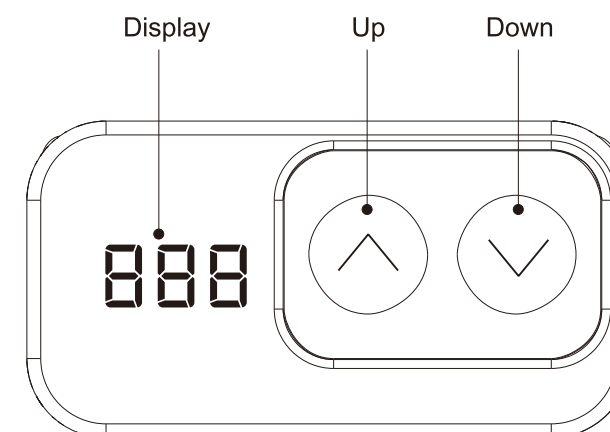
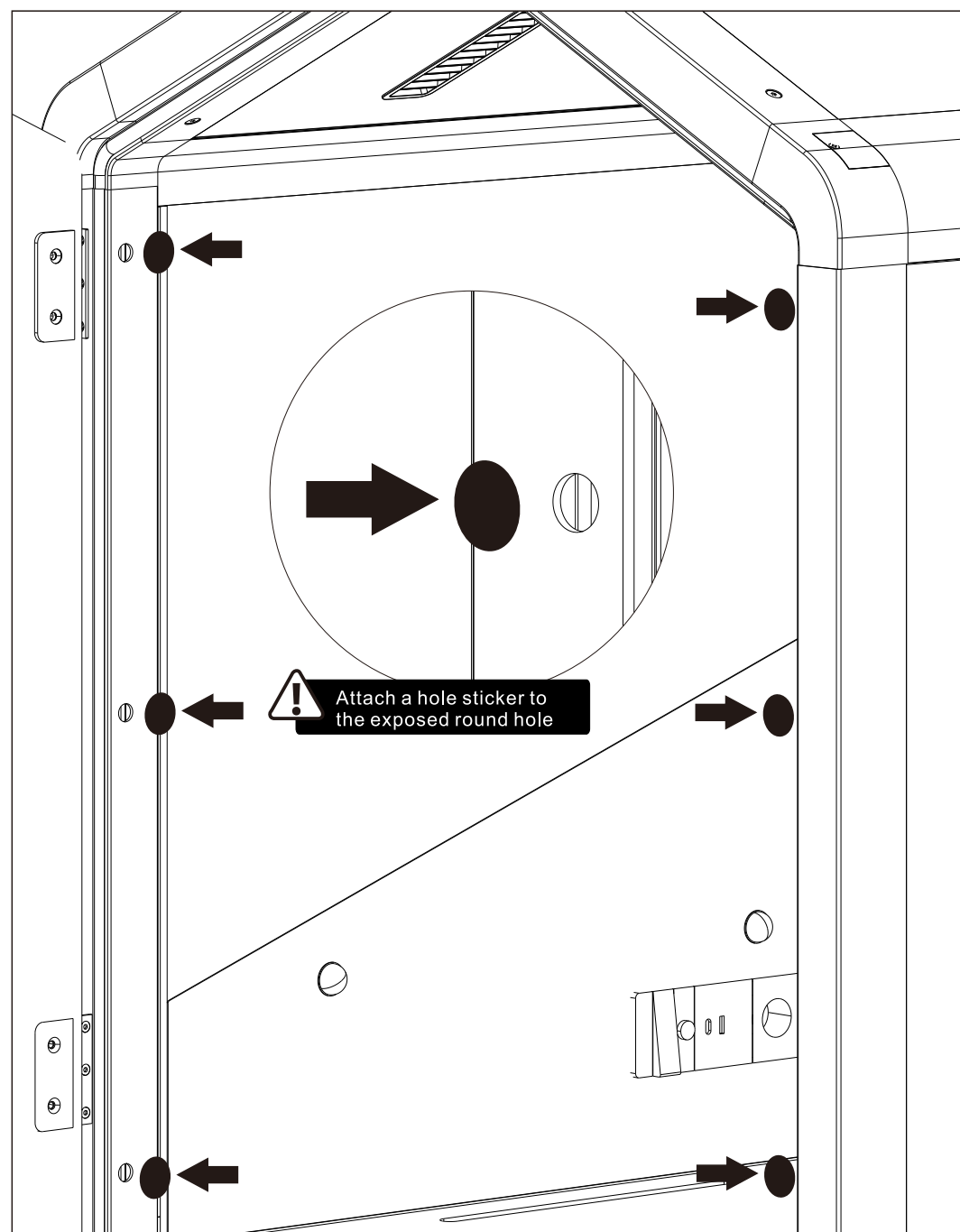




Retrieve the product power cord and plug it in here

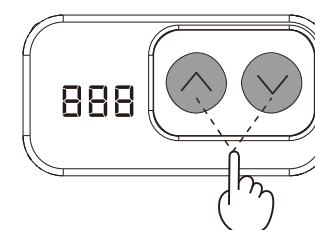


Please turn on the power switch after power on



Note: please ensure that there are no obstacles obstructing the lifting process and that the power cord is of sufficient length to allow the product to lift without any hindrance.

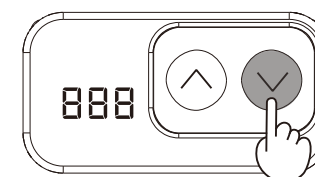
● Height Adjustable Function:



a. Press the "^" or "v" button to adjust the height. The LED display shows the current height.

b. During the operation, press any key to stop the lifting process.

● Reset Function:



a. When at the lowest position, press and hold the "v" key for more than 5 seconds to enter the reset mode, until the lifting system reaches the bottom and stops rebounding.

b. When there is a malfunction in the lifting system, release the button, then press and hold the "v" key until the lifting system reaches the bottom and stops rebounding.

● Troubleshooting:

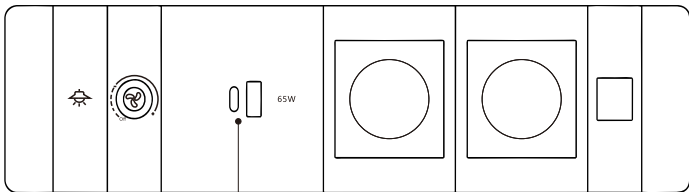


a. When it doesn't work and the LED shows "E01" or "E02", please retry 18 mins later.

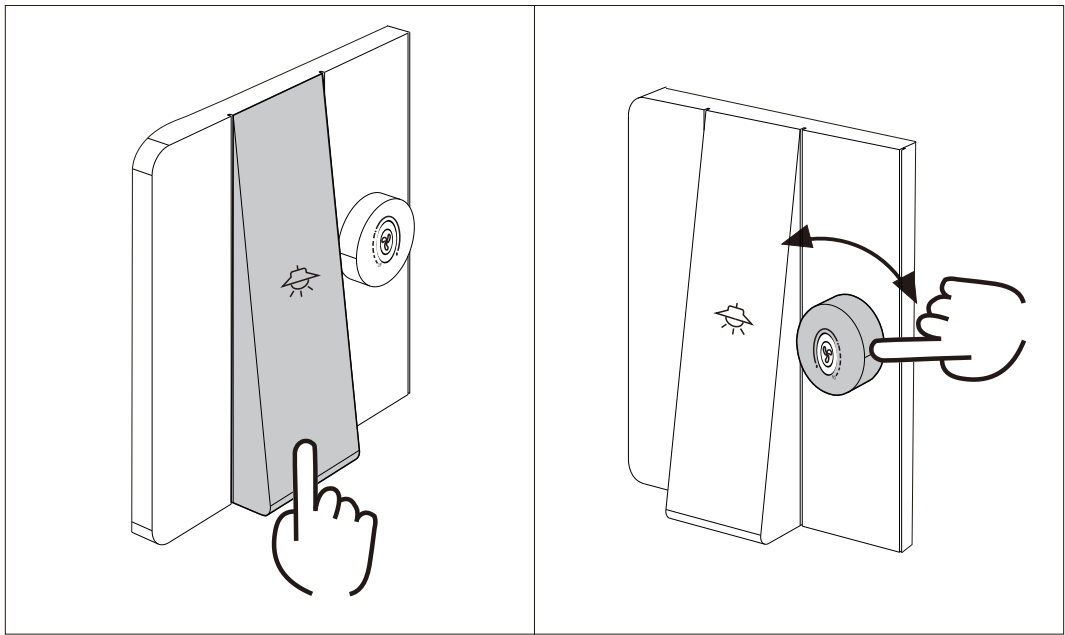
b. If the "v" button doesn't work, please check the cable connection and then cut off the power for at least 10 seconds. Reconnect to the power and press "v" button to start the reset process when it shows the "r5t".

c. If all these above process are inefficient, please contact our customer service.

Use of the switch



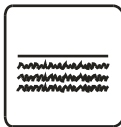
Total maximum power of sockets: 1000W
Total USB-A+USB-C fast charging: 65W



Click up and down to turn the light fixture on/off

Rotate left and right to adjust the ventilation speed

Precaution



Please place it on a flat surface while using it.



The product is suitable for ages 7 and above.



Warning! Watch out for pinch hazards.



Attention! Adults only should install, keep children away.



Do not sit or put pressure on the table. Please do not place heavy objects on it.



Danger! Do not play with frequent lifting and lowering.

Attention

- 1.Power supply:AC100V-110V;.
- 2. Suggested use environment: indoor 14~104°F.
- 3. Before cleaning, you must unplug it from the power supply. When cleaning, use a slightly damp rag to wipe the surface dust. Do not let water drip into the parts. Do not damage the connecting wires. Do not loosen the plug connections. Please check the screws regularly to see if they are loose and tighten them.
- 4.The electrical box contains electronic components, metals, plastics, wires, etc. It should be disposed of according to the environmental regulations of each country. Do not dispose of it as regular household waste.
- 5.Before using the product, please carefully check to ensure that it has been installed correctly. Follow the installation steps in the manual. When installing and placing the product, please leave enough safety space.
- 6.Before using the product for the first time, please familiarize yourself with all its functions and program settings.
- 7. Children need to use this product with a guardian. Some of the behaviors of children playing on the product are unpredictable. The manufacturer is not liable for the dangerous consequences of such behavior.
- 8. The manufacturer will not be held liable for failure to use the product in accordance with these instructions. The manufacturer is not liable for dangers that are not caused by the quality of the product itself.
- 9. Slight noises caused by the structure of the multi-wedge belt or the braking system will not have any effect on the use of the equipment.
- 10. It is forbidden to use corrosive or abrasive materials to clean the equipment. It must be ensured that the cleaning agent used will not pollute the environment.
- 11. Operate with knowledge of the relevant hazards. Children aged 14 or under, people with physical sensory defects, and mental disabilities should use the product under proper supervision and guidance. Children are not allowed to have free access to play products.
- 12. Minors should not clean or maintain the product without supervision.
- 13. If the power cord is damaged, it must be replaced by the manufacturer or relevant professionals.
- 14. Please make sure that there are no other dangerous sources in your operating environment.
- 15. When moving, please make sure that: there are no items on the table, the door is closed, the screws are tightened and not loose, and the power plug is unplugged.
- 16. If you need to move it repeatedly, please keep the original packaging of the product and keep it properly for repeated transportation.
- 17. It is forbidden to use sharp instruments to knock on the glass.
- 18. Note: The total power of electrical appliances used in the cabin should not exceed 1000W!

Recycling and Disposal



This product cannot be disposed of as household waste. To prevent damage to the environment, this product should be recycled. Please use the relevant recycling systems available to you or contract the distributor or manufacturer for recycling assistance.

This limited warranty offered by FlexiSpot covers defects in material or workmanship in new FlexiSpot products. This warranty extends to the original purchaser only and is non-transferable. Only consumers purchasing FlexiSpot products from authorized FlexiSpot retailers or resellers may benefit from our limited warranty.

What is Covered?

The FlexiSpot limited warranty covers our products against defects in material or workmanship as follows:

•FlexiSpot Height Adjustable Desk Frames

All height-adjustable desks feature a 5-year warranty for the frame & motor and a 2-year warranty for the controller, switch, electronics and other mechanisms.

•FlexiSpot Sit-Stand Desktop Workstations

All sit-stand desktop workstations feature a 5-year warranty for the frame and desktop and 3-year warranty for the gas spring system and other mechanisms.

•FlexiSpot Desk Bikes

All desk bikes and parts, including the frame, electronics, and other mechanisms, feature a 1-year warranty.

•FlexiSpot Mini Steppers

All Mini Steppers feature a 3-year warranty.

•FlexiSpot Monitor Mounts

All monitor mounts and parts, including arms, gas spring systems and other mechanisms, feature a 5-year warranty.

•FlexiSpot Meeting Pods

All meeting pods feature a 2-year warranty.

What are your Remedies?

FlexiSpot will replace at no charge to the consumer the defective parts only or, at FlexiSpot's option, replace any product or part of the product that is defective because of improper workmanship and/or material, under normal installation, use, service and maintenance. If FlexiSpot is unable to provide a replacement and repair is not practical or cannot be completed in a timely fashion, FlexiSpot may elect to refund the purchase price in exchange for the return of the product. In the rare event that your FlexiSpot product is defective, we will provide you with a replacement item shipped at no cost to you within the continental United States. The shipping method for replacement products is FedEx Ground, but expedited shipping is available if you choose to pay the additional expense. In addition, you will need to pay the shipping costs if any products need to be shipped to you at an address outside the continental United States.

REPAIR OR REPLACEMENT (OR, IN LIMITED CIRCUMSTANCES, REFUND OF THE PURCHASE PRICE) AS PROVIDED UNDER THIS WARRANTY IS THE EXCLUSIVE REMEDY OF THE PURCHASER. FLEXISPOT NEITHER ASSUMES NOR AUTHORIZES ANY PERSON TO CREATE FOR ANY OTHER OBLIGATION OR LIABILITY IN CONNECTION WITH THIS PRODUCT.

What is Not Covered?

Our limited warranty does not cover any problem that is caused by:

1. Conditions, malfunctions or damage not resulting from defects in material or workmanship.
2. Conditions, malfunctions or damage resulting from normal wear and tear, improper installation, improper maintenance, misuse, abuse, negligence, accident or alteration.
3. Accessories, connected materials and products, or related products not manufactured by FlexiSpot.
4. Conditions, malfunctions or damage resulting from failure to follow the instructions and guidelines relating to the product's intended use.

Our limited warranty is void if a product is returned with removed, damaged or tampered labels or any alterations (including removal of any component or external cover).

How to File a Claim?

In order to receive the benefit of our limited warranty, you need to process your claim in compliance with the terms of this limited warranty and follow proper return procedure. To request warranty service, please contact customer service via email at contact@FlexiSpot.com or toll free at 855-421-2808. You will need to provide the sales receipt or other evidence of the date and place of purchase for your FlexiSpot product.

Implied Warranties and Limitation of Damages

EXCEPT TO THE EXTENT PROHIBITED BY APPLICABLE LAW, ALL IMPLIED WARRANTIES (INCLUDING WARRANTIES OF MERCHANTABILITY AND FITNESS FOR A PARTICULAR PURPOSE) SHALL BE LIMITED IN DURATION TO THE DURATION OF THIS WARRANTY, AND FLEXISPOT SHALL NOT BE LIABLE FOR ANY INCIDENTAL, INDIRECT, SPECIAL, OR CONSEQUENTIAL DAMAGES, INCLUDING BUT NOT LIMITED TO LOSS OF PROFITS OR REVENUE, RESULTING FROM ANY BREACH OF EXPRESS OR IMPLIED WARRANTY OR CONDITION, OR UNDER ANY OTHER LEGAL THEORY, EVEN IF FLEXISPOT HAS BEEN ADVISED OF THE POSSIBILITY OF SUCH DAMAGES. Some jurisdictions do not allow limitations on the duration of an implied warranty or the exclusion or limitation of special, indirect, incidental or consequential damages, so the above limitations or exclusions may not apply to you.

Governing Law

This Warranty shall be governed by the laws of the State of California, USA, without giving effect to any conflict of laws principles that may provide the application of the law of another jurisdiction.

How State Law Applies

This Warranty gives you specific legal rights, and you may also have other rights which vary from state to state.