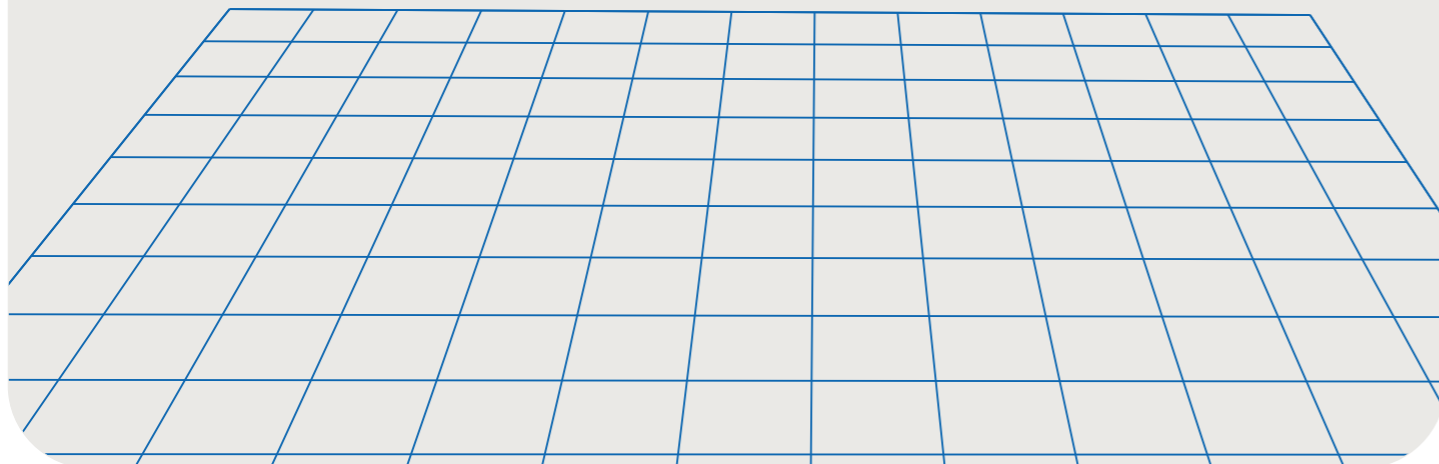


Live like new

Website: www.flexispot.com

Tel: 1-855-585-5618

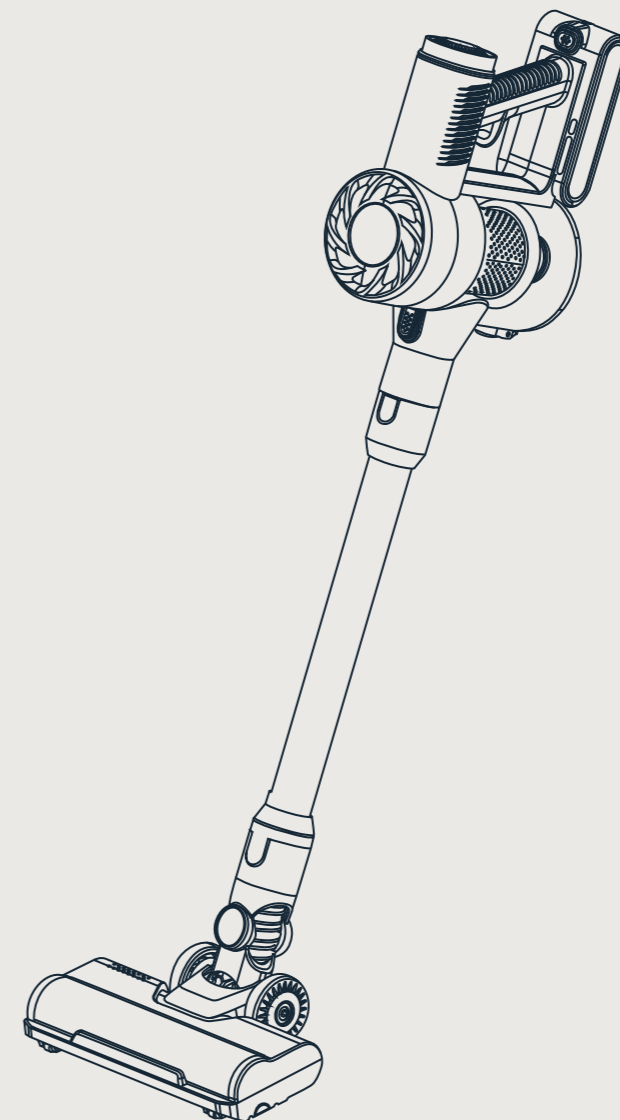
Address: 300 GODDARD WAY, IRVINE, CA 92618



FlexiSpot

Item No. N2

User Manual



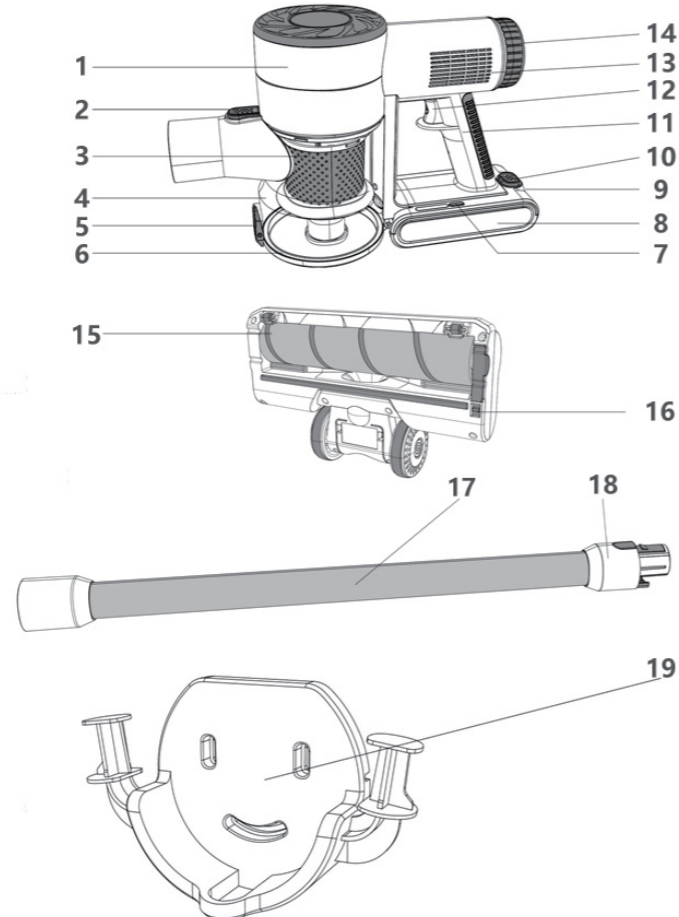
Package List

Please check and confirm the accessories and parts according to the follwing sheet before using.

Part name	Quantity
Main Body	1
Tube	1
Floor bush	1
2 in 1 Dusting Brsuh	1
Crevice Tool	1
Wall mount	1
Adaptor	1
Manual	1

Accessories Introduction

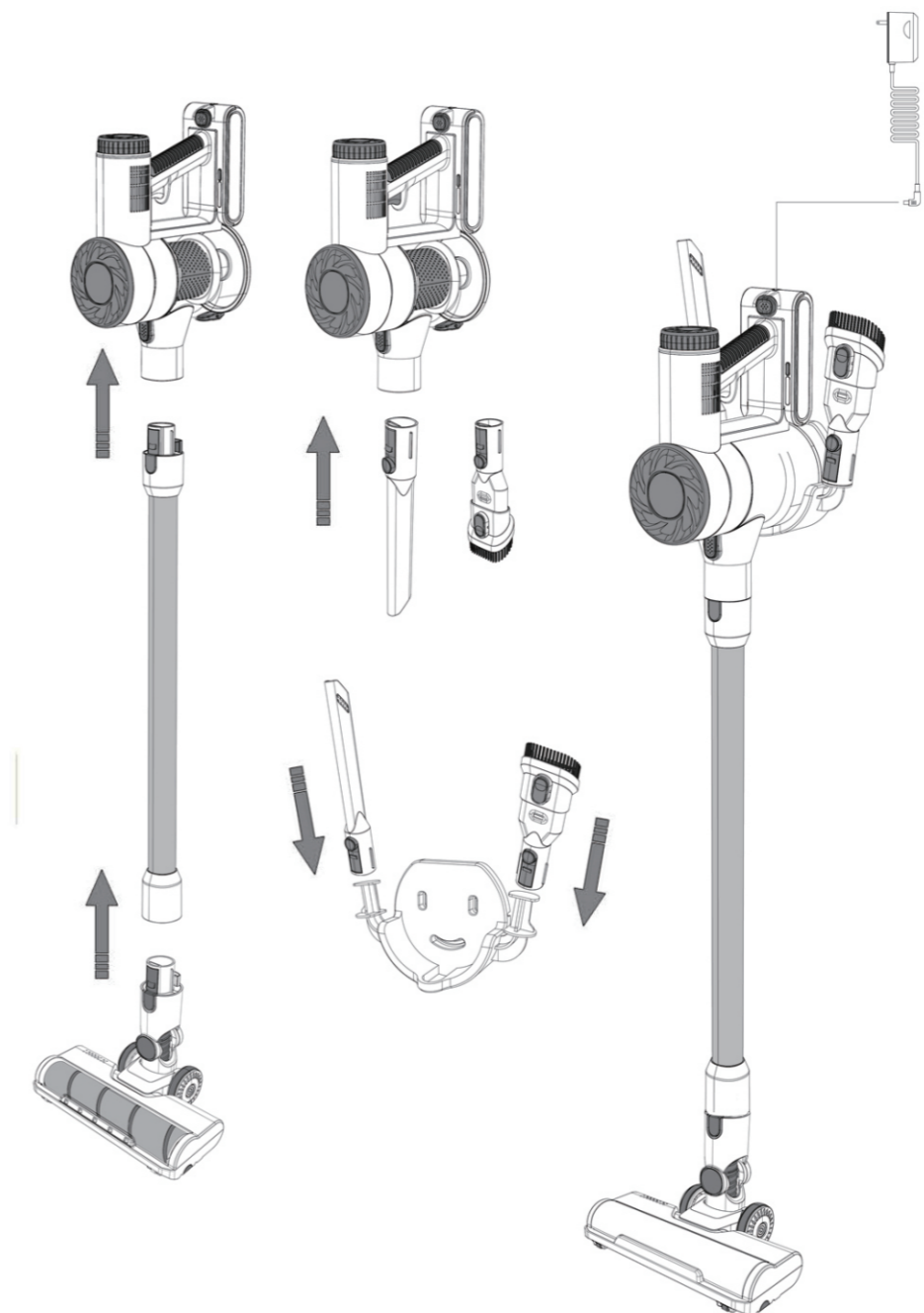
- (1) Main Body
- (2) Dust Cup Release Button
- (3) Stainless Steel Filter
- (4) Dust Cup
- (5) Dust Cup Cover Release Button
- (6) Dust Cup Lid
- (7) Mode Switch
- (8) Detachable Battery
- (9) Charging port
- (10) Battery Release Button
- (11) Handle
- (12) Switch
- (13) Exhaust Vent
- (14) HEPA Filter
- (15) Detachable Rolling Brush
- (16) Rolling Brush Release Button
- (17) Tube
- (18) Main Body Release Button
- (19) Wall Mount



Specification

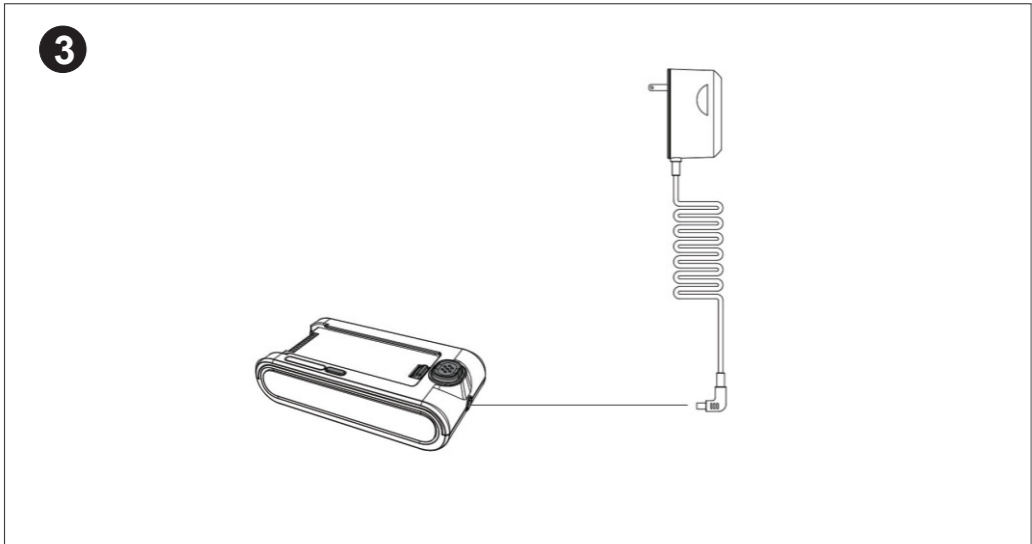
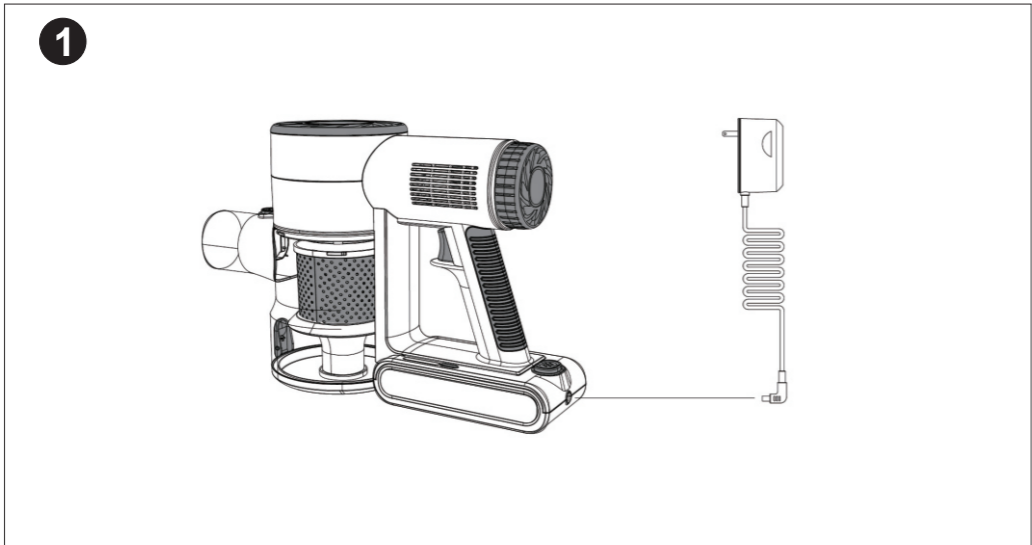
Item No.	N2
Voltage	22.2V
Power	200W
INPUT	100-240V~50/60Hz 0.5A

Product Assembling Diagram



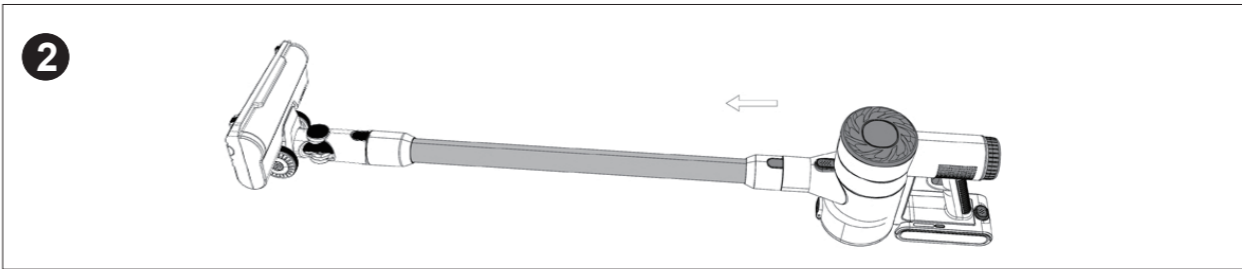
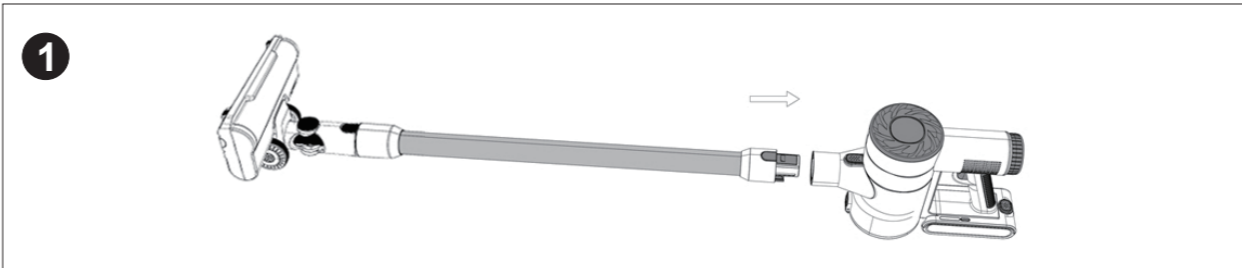
Charging Product

- 1. Connect the Main Body to Charge
- 2 Hang on the wall mount to charge
- 3 Remove the battery and charge it separately

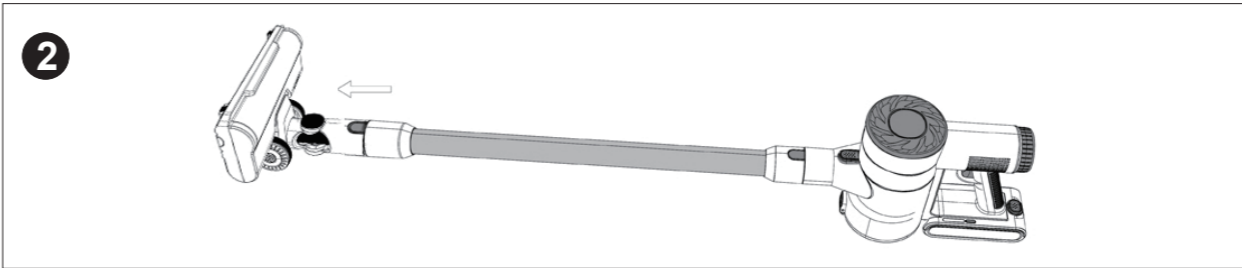
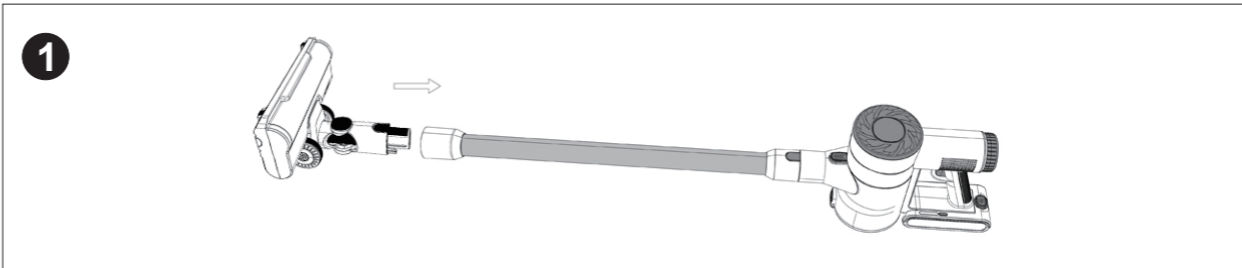


Product Introduction

- 1. Aluminum Tube Install and Remove**
- ① Push the end of the aluminum tube into the suction port of the main body in the horizontal direction, until hear the "click" sound.
 - ② Holding the main body with one hand, press the main body release button on the aluminum tube assembly with another hand, and pull outward horizontally to remove the aluminum tube.

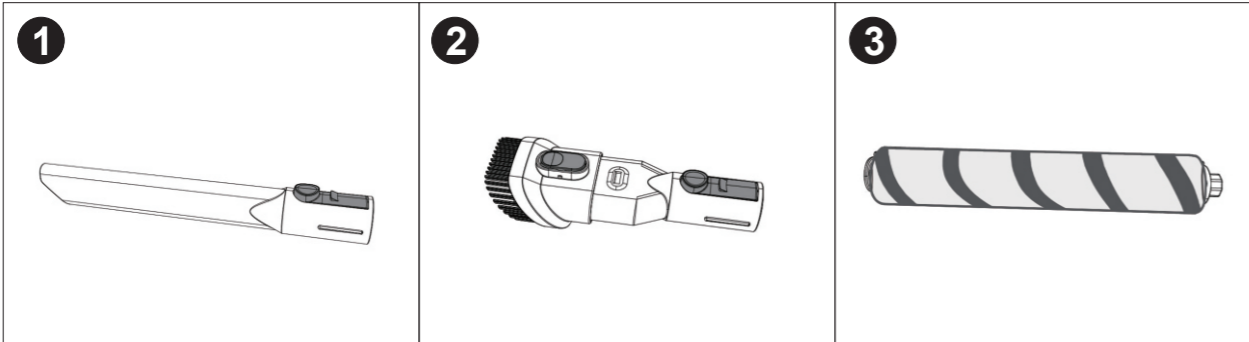


- 2. Brush Head Install & Remove**
- ① Push the end of the brush horizontally into the mouth of the aluminum tube. when you hear a click, the installation is successful.
 - ② Hold the brush head with one hand, press the brush release button with another hand, and pull the brush head out horizontally to remove and change brush head.



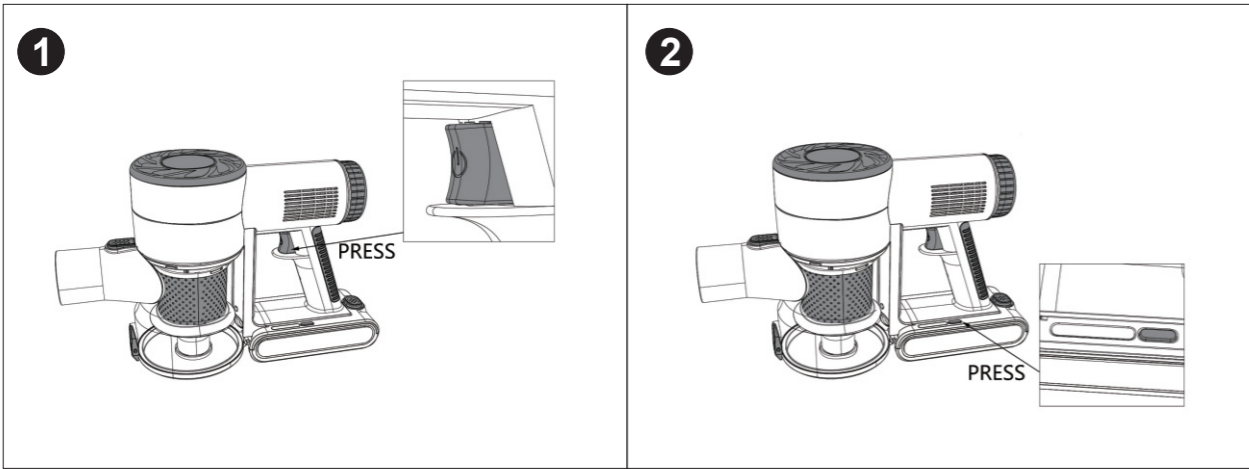
Brush Introduction

- ① **Crevice Nozzle**
Remove dust on hard to reach area like windows, bed feet, gaps between tables and chairs, etc.
- ② **2in1BrushTool**
Remove dust and hair on carpets and fleece
- ③ **Hardwood Floor Brush Shaft**
Removing dust, debris and hair from hard floors



How to Use

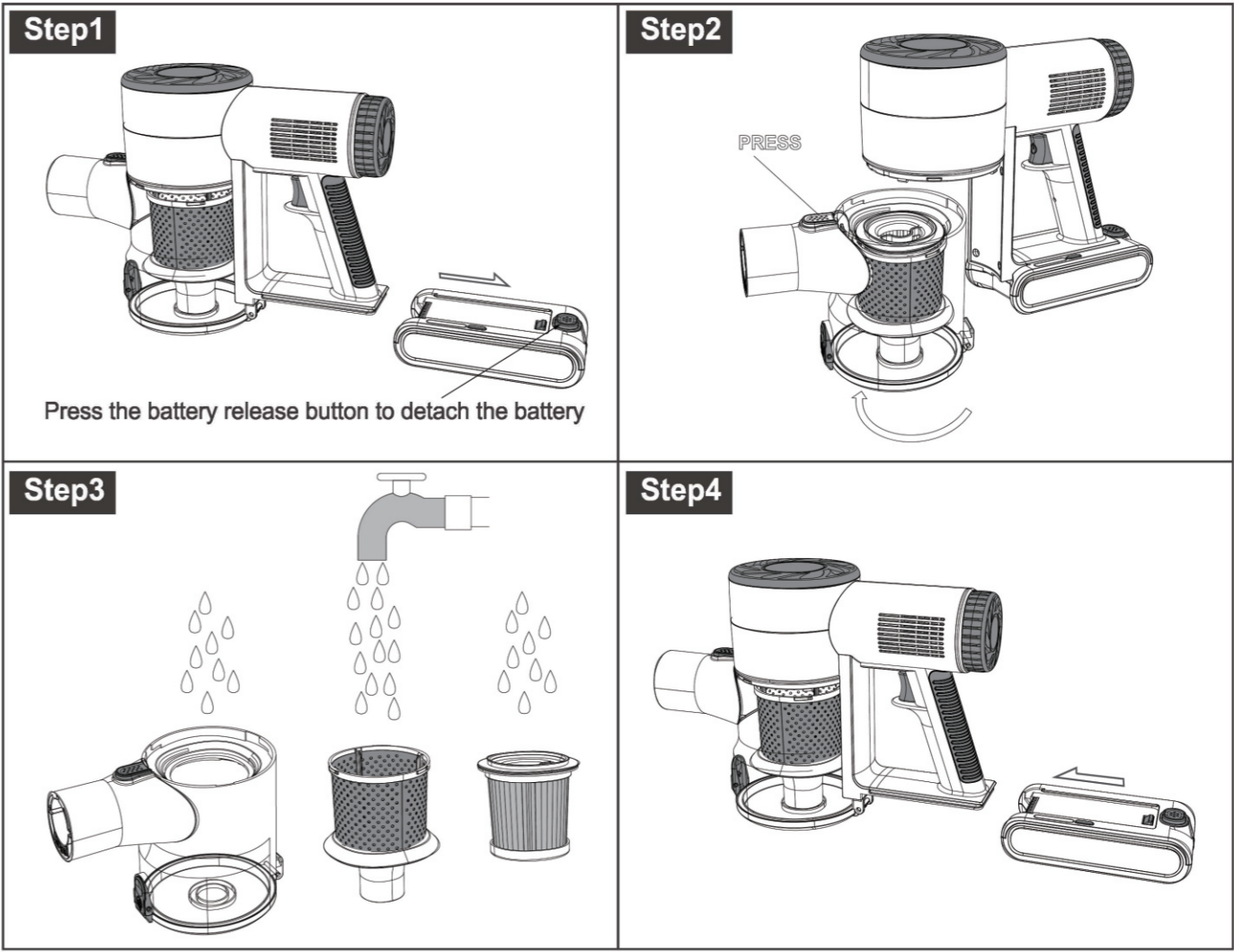
- 1. Preparing**
Please confirm if the vacuum is fully charged before using. Please charge it for more than 5 hours before the first use to ensure the normal operation of the product. Then select the appropriate brush head according to the area need to be cleaned.(check the"Brush Instructions")
- 2. Operating**
 - ① Press the Switch, the machine wil start to operate, press the switch button again, the machine would stop working.
 - ② The vacuum cleaner has two modes: strong and normal. Please press the +/- button to adjust when you need to adjust the intensity



Product Routine Maintenance

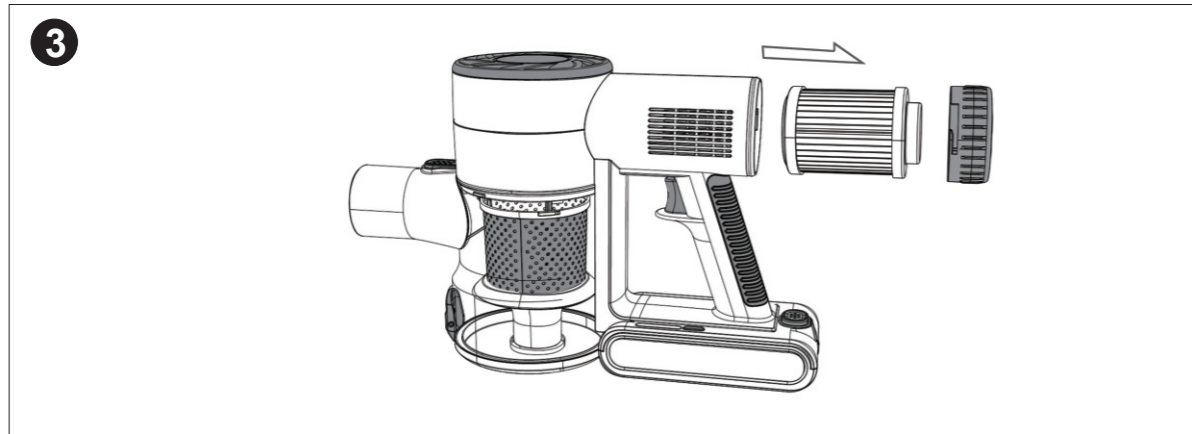
Please clean it regularly to prolong the service life of the vacuum cleaner.

- 1. Main Body(hand-held , non-washable parts) Cleaning:**
 - (1) Tum off the power before cleaning the body
 - (2) Please use a neutral detergent , wipe the body with half-wet cloth ,
 - (3) Please avoid sun exposure and store in a cool and dry place.
- 2. Dust Box Cleaning**
Attention: Remove the battery before cleaning the dust box!
 - ① Stop the machine, open the lid of the dust cup, and dump out the garbage.(as the picture shows)
 - ② Press the dust box removal button and rotate the product clockwise to remove the dust cup for further cleaning(as shown in the figure) .
 - ③ Remove the product dust collector, take out the internal filter sponge, rinse with water, and put it back in place when it is completely dry.
 - ④ After the cleaning is completed, close the dust cup lid , then put the dust cup back into the main body. Turn the dust cup and a "click" sound mean it is completely installed.



3. Exhaust Port Filter Cleaning

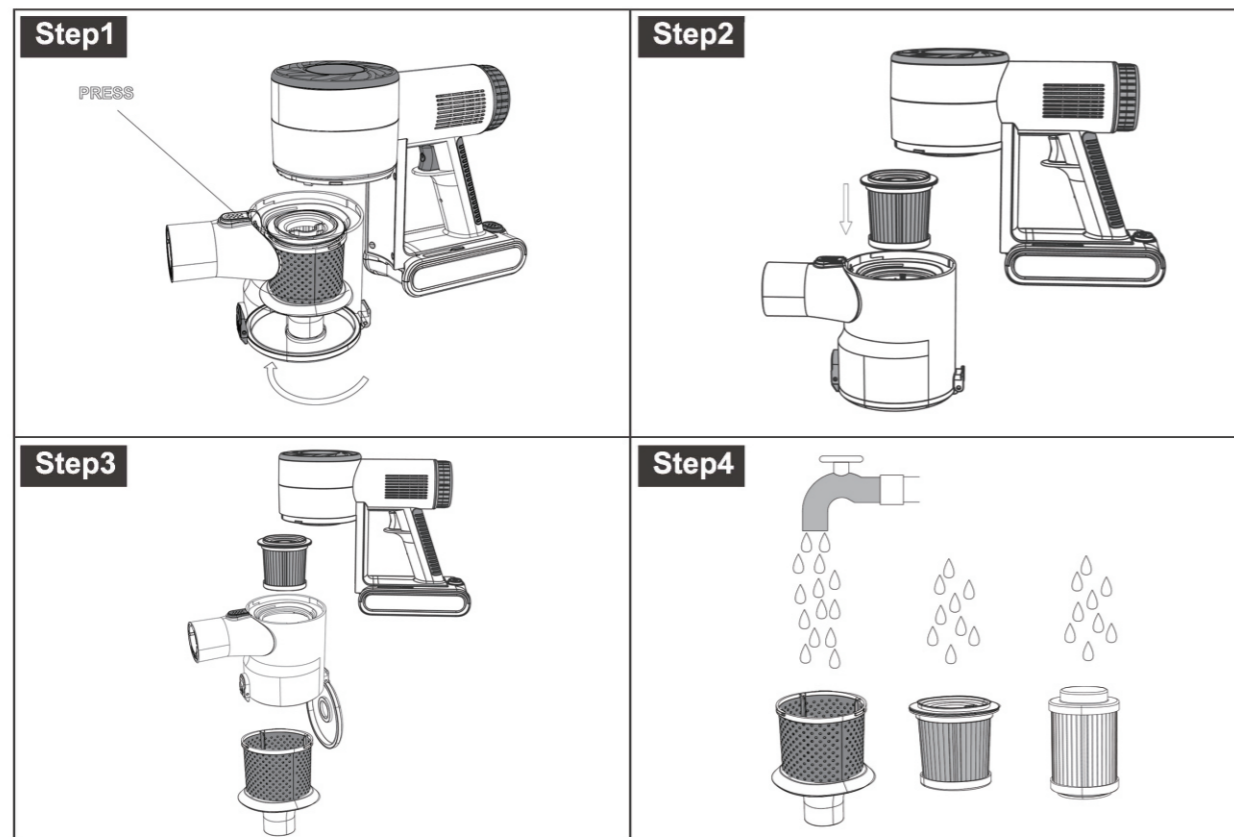
- (1) Turn off the power before cleaning the body
- (2) Please use a neutral detergent, wipe the body with half-wet cloth ,
- (3) Please avoid sun exposure and store in a cool and dry place.



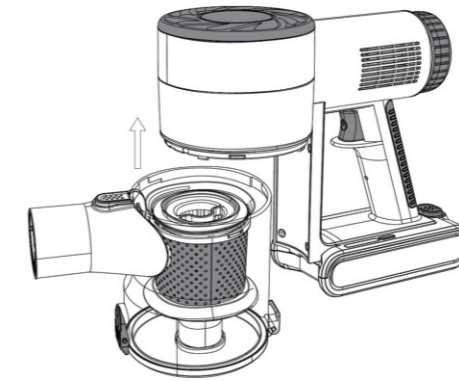
4. Filter Cleaning

Please clean the dust box and filter regularly to prolong the service life of the vacuum cleaner. The filter is recommended to be cleaned every month.

- (1) Open the dustbin lid
- (2) Pull out the filter from the dust bin
- (3) Remove the mesh filter by rotating counterclockwise
- (4) Clean the filter with water and brush cleaning tool
- (5) Put the filter back in the dust box after it is dried in the shade



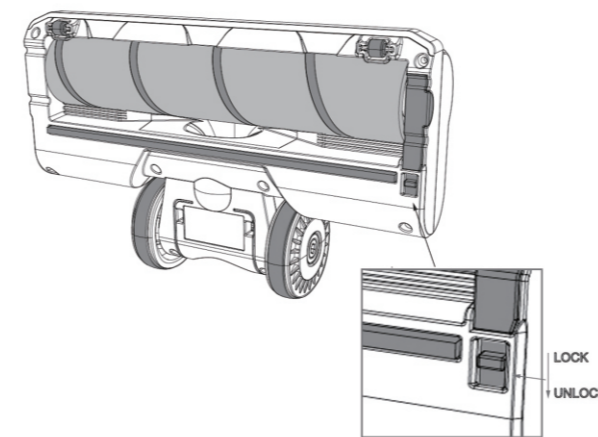
Step5



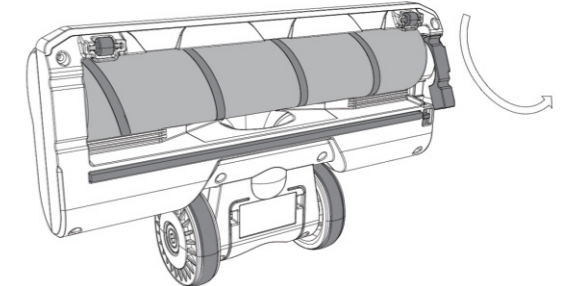
5. Roller Cleaning

- (1) Rotate the part in the direction of the arrow as shown to loosen the roller
- (2) Tilt and shake top our out the roller, use the brush cleaning tool to sweep away the trash on the roller
- (3) Put the clean roller back into the brush head, and rotate the part as picture shown to fix it

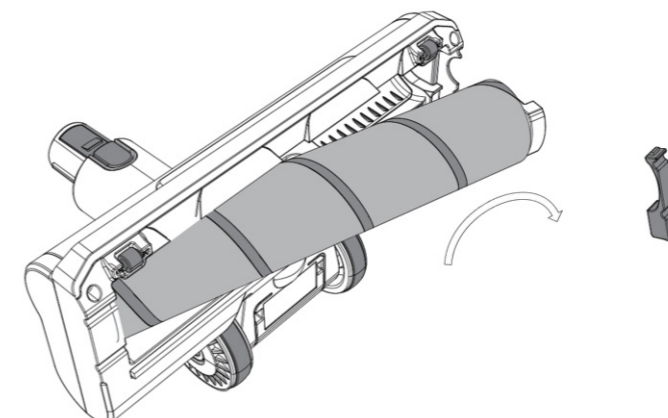
Step1



Step2



Step3



FlexiSpot Limited Warranty

This limited warranty offered by FlexiSpot covers defects in material or workmanship in new FlexiSpot products. This warranty extends to the original purchaser only and is non-transferable. Only consumers purchasing FlexiSpot products from authorized FlexiSpot retailers or resellers may benefit from our limited warranty.

What is Covered?

FlexiSpot Cordless Vacuum
·All cordless vacuums in the N2 series purchased on or after October 5, 2016 include a 2-year warranty and 30-day no-questions-asked return.

What are your Remedies?

FlexiSpot will replace at no charge to the consumer the defective parts only or, at FlexiSpot's option, replace any product or part of the product that is defective because of improper workmanship and/or material, under normal installation, use, service and maintenance. If FlexiSpot is unable to provide a replacement and repair is not practical or cannot be completed in a timely fashion, FlexiSpot may elect to refund the purchase price in exchange for the return of the product. In the rare event that your FlexiSpot product is defective, we will provide you with a replacement item shipped at no cost to you within the continental United States. The shipping method for replacement products is FedEx Ground, but expedited shipping is available if you choose to pay the additional expense. In addition, you will need to pay the shipping costs if any products need to be shipped to you at an address outside the continental United States.

REPAIR OR REPLACEMENT (OR, IN LIMITED CIRCUMSTANCES, REFUND OF THE PURCHASE PRICE) AS PROVIDED UNDER THIS WARRANTY IS THE EXCLUSIVE REMEDY OF THE PURCHASER. FLEXISPOT NEITHER ASSUMES NOR AUTHORIZES ANY PERSON TO CREATE FOR ANY OTHER OBLIGATION OR LIABILITY IN CONNECTION WITH THIS PRODUCT.

What is Not Covered?

Our limited warranty does not cover any problem that is caused by:

1. Conditions, malfunctions or damage not resulting from defects in material or workmanship.
 2. Conditions, malfunctions or damage resulting from normal wear and tear, improper installation, improper maintenance, misuse, abuse, negligence, accident or alteration.
 3. Accessories, connected materials and products, or related products not manufactured by FlexiSpot.
 4. Conditions, malfunctions or damage resulting from failure to follow the instructions and guidelines relating to the product's intended use.
- Our limited warranty is void if a product is returned with removed, damaged or tampered labels or any alterations (including removal of any component or external cover).

FlexiSpot Limited Warranty

How to File a Claim?

In order to receive the benefit of our limited warranty, you need to process your claim in compliance with the terms of this limited warranty and follow proper return procedure. To request warranty service, please contact customer service via email at contact@FlexiSpot.com or toll free at 855-421-2808. You will need to provide the sales receipt or other evidence of the date and place of purchase for your FlexiSpot product.

Implied Warranties and Limitation of Damages

EXCEPT TO THE EXTENT PROHIBITED BY APPLICABLE LAW, ALL IMPLIED WARRANTIES (INCLUDING WARRANTIES OF MERCHANTABILITY AND FITNESS FOR A PARTICULAR PURPOSE) SHALL BE LIMITED IN DURATION TO THE DURATION OF THIS WARRANTY, AND FLEXISPOT SHALL NOT BE LIABLE FOR ANY INCIDENTAL, INDIRECT, SPECIAL, OR CONSEQUENTIAL DAMAGES, INCLUDING BUT NOT LIMITED TO LOSS OF PROFITS OR REVENUE, RESULTING FROM ANY BREACH OF EXPRESS OR IMPLIED WARRANTY OR CONDITION, OR UNDER ANY OTHER LEGAL THEORY, EVEN IF FLEXISPOT HAS BEEN ADVISED OF THE POSSIBILITY OF SUCH DAMAGES. Some jurisdictions do not allow limitations on the duration of an implied warranty or the exclusion or limitation of special, indirect, incidental or consequential damages, so the above limitations or exclusions may not apply to you.

Governing Law

This Warranty shall be governed by the laws of the State of California, USA, without giving effect to any conflict of laws principles that may provide the application of the law of another jurisdiction.

How State Law Applies

This Warranty gives you specific legal rights, and you may also have other rights which vary from state to state.